



**A movement of local governments
dedicated to improving
environmental conditions through
CUMULATIVE LOCAL ACTION**
www.icleiusa.org

National Networks for Local Climate Action



U.S. Mayor's Climate Protection Agreement – 850+ signatories



Cities/Counties for Climate Protection Campaign (CCP)– 475+ members in USA.

Local Sources, Local Solutions





Solid Waste Energy Transportation Water



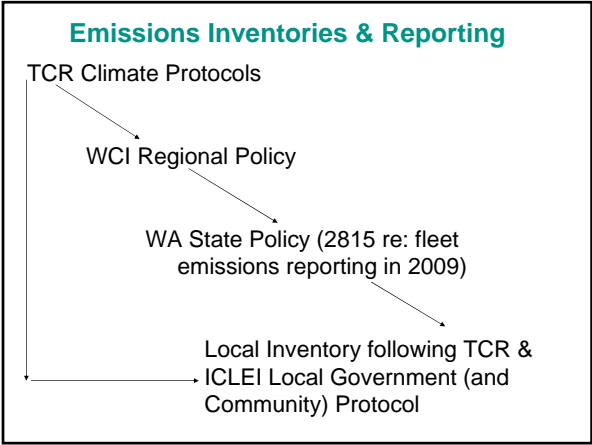
1. GHG Inventory
2. Set GHG Reduction Target
3. Action Plan
4. Implement Plan
5. Monitor and Evaluate Plan



The Local Government Emissions Analysis Protocol

- Provide standard guidance for local government operations (March 2009) & geopolitical boundaries (late 2009).
- Harmonize reporting GHG inventories to multiple programs.
- Advance the consistent, comparable and relevant quantification of emissions.
- Ensure that GHG inventories conducted by Local Governments now will be compliant with any future regulations





Government Operations

Sources: Transportation Fuels, Natural Gas, Electricity, Methane from Solid Waste







Sectors:

- Buildings
- Vehicle Fleet
- Employee Commute
- Streetlights
- Water/Sewage
- Solid Waste



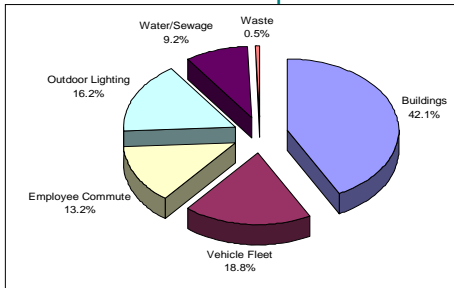
Community-wide Emissions

Sources: Transportation Fuels, Natural Gas, Electricity, Methane from Solid Waste

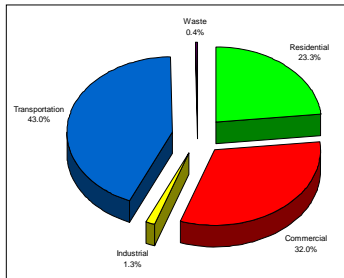


Sectors:
Residential
Commercial (inc. Agriculture)
Industrial
Transportation
Solid Waste

City A: Example GHG Profile for Government Operations



City A: Example GHG Profile for Community (Geographic)



Emissions Inventories, Policy & Reporting

Metrics – Quantitative information for GHG Inventory

- Community – Total vmt; total commercial electricity use
 - Gov't - Average fleet VMT; total energy use per facility
- > **Reporting** a subset of these metrics e.g. WA 2815 for fleet emissions

Indicators – Qualitative or quantitative information that rounds out GHG inventory metrics

- Community – Average trip distance, use of transit; comm. electricity use per business/sq foot;
- Gov't – Average trip distance/idle time; electricity use per sq. foot or per employee in each facility

Policy > Metrics alone often not sufficient

Energy Efficiency for Municipal Operations “LOW HANGING FRUIT”



•Energy STAR Preferable Purchasing for Appliances & Electronics (WA GSA)



•Mandating green building standards (LEED & Built Green) for new construction (Burien & Everett)



•Automatic sensors for lights; sleep mode for electronics (Bellevue, WA)

•LED replacement for traffic lights – and now streetlights (too many to list!)

•Dim street lights



Municipal Energy Fund Ann Arbor, MI

- A source of funds for investment in energy-efficient retrofits at city facilities
- Provides the difficult up-front costs and then captures 80% of the resulting savings, which are then invested in further projects
- The fund can become self-sustaining in 3-5 years requiring no additional annual appropriations.
- An initial 100k investment upped to 500k due to success of program >> 7 million saved in 10 years!!



Energy Efficiency for the Community



- Low income home weatherization programs



- Expediting green building permits (King County)

- Green Business Recognition Programs (Kirkland)



- Community energy efficiency challenge (Burlington, VT)



- Community green power challenge (Bellingham)



Fleet Management for Municipal Operations “LOW HANGING FRUIT”

- Anti-Idling & driver education programs

- Replace fleet vehicles with Flexcar

- Flextime and telecommuting

- Use of alternative transportation where feasible for work

- Downsize vehicle fleet – is that SUV necessary for administrative staff?



Resources:

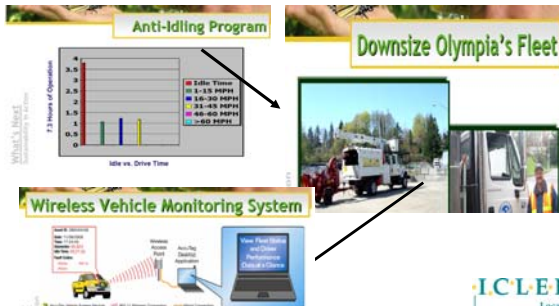
www.psgreenfleets.org

www.airwatchnorthwest.org/anti-idling.htm



What are other cities doing? Olympia, WA

Overall, total vehicle emissions in 2005 were down 5%, which continues a downward trend from 2003.



Courtesy of Michael Mucha, City of Olympia



Renewable Energy

Ellensburg Community Solar Project

- People in the Community partner with the Utility to help fund the 36 kWh project.
- In exchange for their financial support – City will give the contributors a credit on their utility bill for the value of the electricity produced by the solar system.

Residential Solar - Berkeley, CA

- New tax district to finance solar energy systems through property taxes.
- City provides money for installation and material costs, homeowners pay back at a fixed rate over 20 years.
- Residents pay about \$180 a month through property tax bills for a typical \$22,000 solar-electric system.



Waste Reduction

Seattle, WA – Ban on Recyclables in Garbage

- Ordinance can save residents and businesses as much as \$2 million per year and keep future garbage costs low.
- The measure is projected to achieve an annual reduction of 260,000 tons of eCO2



Coupeville, WA – Yard waste Composting

- Could save city 202 tons of CO2 yearly
- Could save city \$10,000 in hauling costs

Community Outreach



Green Business Program Kirkland, WA

www.ci.kirkland.wa.us/Community/Kirkland_Green.htm





What are other cities doing? Eugene, OR

Step 1: I've calculated my climate footprint and I am ready to commit to the Mayor's Climate Challenge!

Step 2: Within the next three months, I will make at least three changes from your checklist to reduce my greenhouse gas emissions.

www.sustaineugene.com

Transportation makes up our greatest source of greenhouse gas emissions in Eugene. Anything you do to cut your time behind the wheel and to drive efficiently have an impact on our region's emissions! A 20 mile per gallon car produces a pound of carbon dioxide for every mile driven.

*checklist pages best viewed in Firefox or Internet Explorer

Already do this	Commit to this	Started doing this	
<input type="checkbox"/>	<input type="checkbox"/>	<input type="checkbox"/>	Reduce your vehicle miles. Once (or once more) a week
<input type="checkbox"/>	<input type="checkbox"/>	<input type="checkbox"/>	1. Try people powered travel. Stay fit and cut your greenhouse gas emissions by biking or walking instead of driving.
<input type="checkbox"/>	<input type="checkbox"/>	<input type="checkbox"/>	2. Take the bus! Ride the new EXOT or your local bus. Click here for a schedule and routes.

Seattle, WA



Engage residents and businesses in climate solutions by focusing on the answers:

- Calculate your carbon footprint,
- Develop your own climate action plan,
- Find climate protection resources and ideas participating with friends and neighbors in local events.

www.seattlecan.org

- Neighborhood Matching Fund** – Grants to Community Groups for Energy Efficiency Projects
 - Seattle Climate Partnership** – Business Engagement Program with City of Seattle Chamber of Commerce
- www.seattle.gov/climate