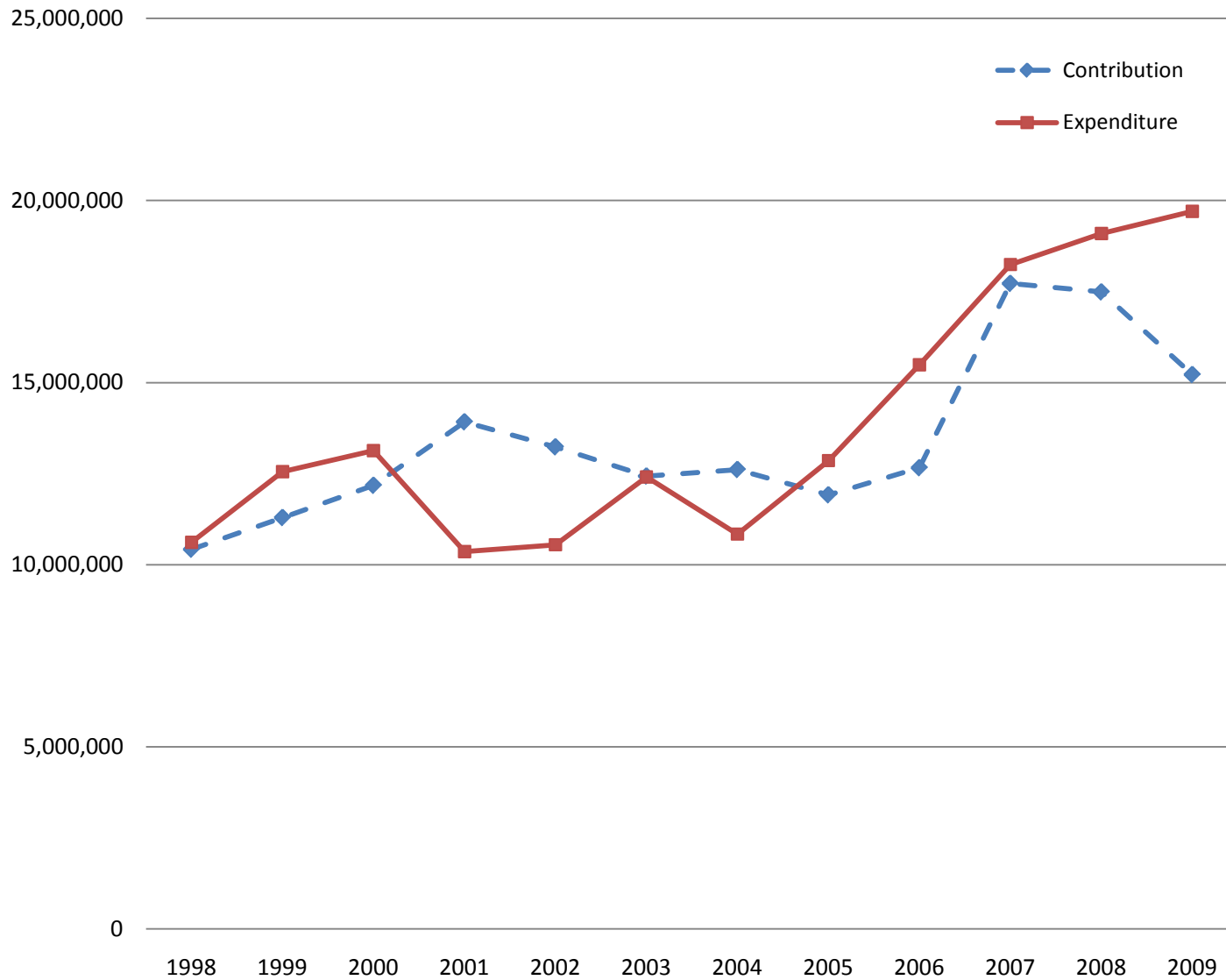


Fleet Capital Contributions and Expenditures

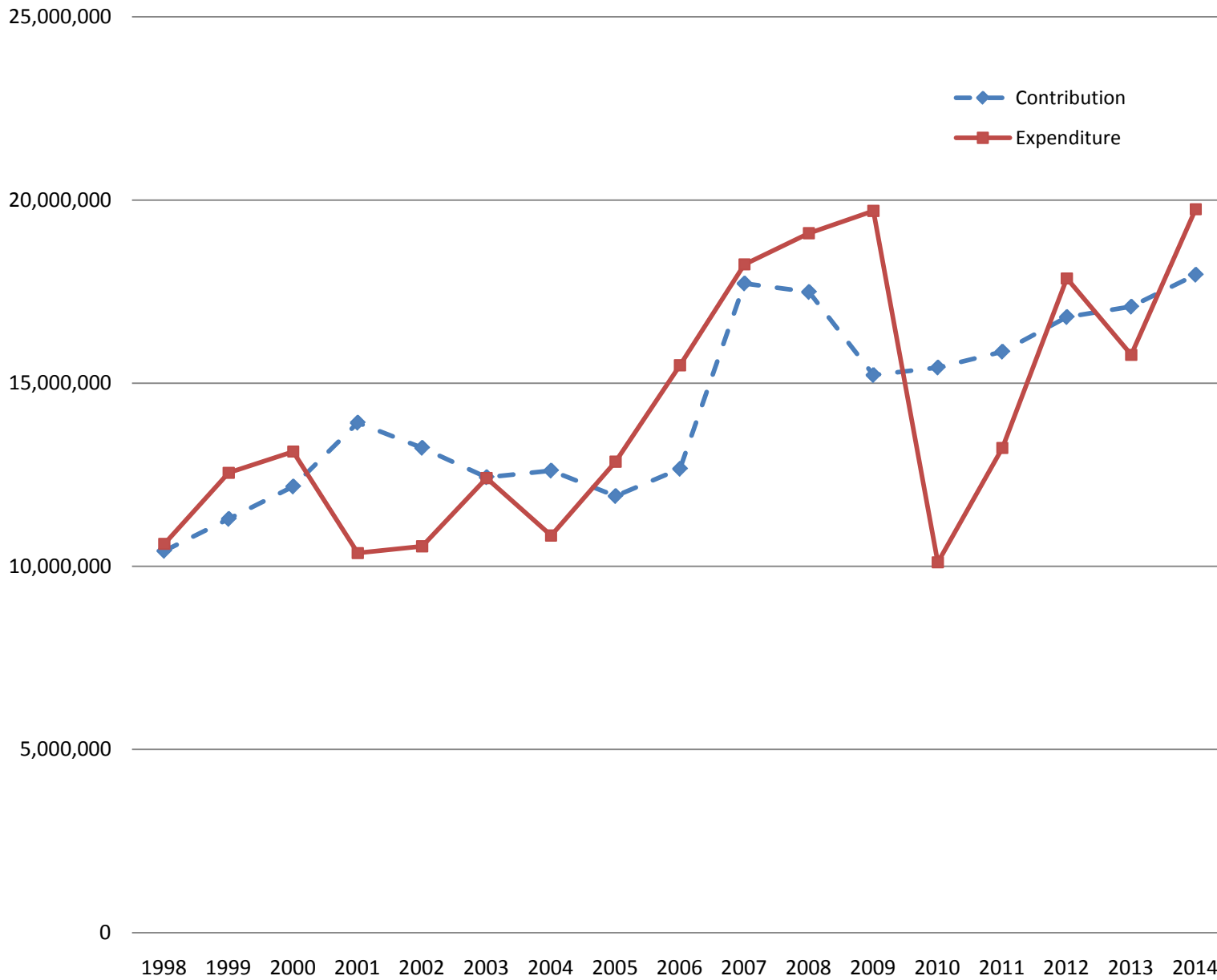


Contributions include department payments plus salvage proceeds; 2009 projected

The charts on this and the following two pages illustrate the contributions City of Seattle departments make toward fleet replacement, as well as the money the City spends to replace vehicles. The chart on page 1 shows historical data and projects expenditures and contributions projected through 2009; the chart on page 2 projects these figures out through 2014 and the chart on page 3 carries the projections out through 2020.

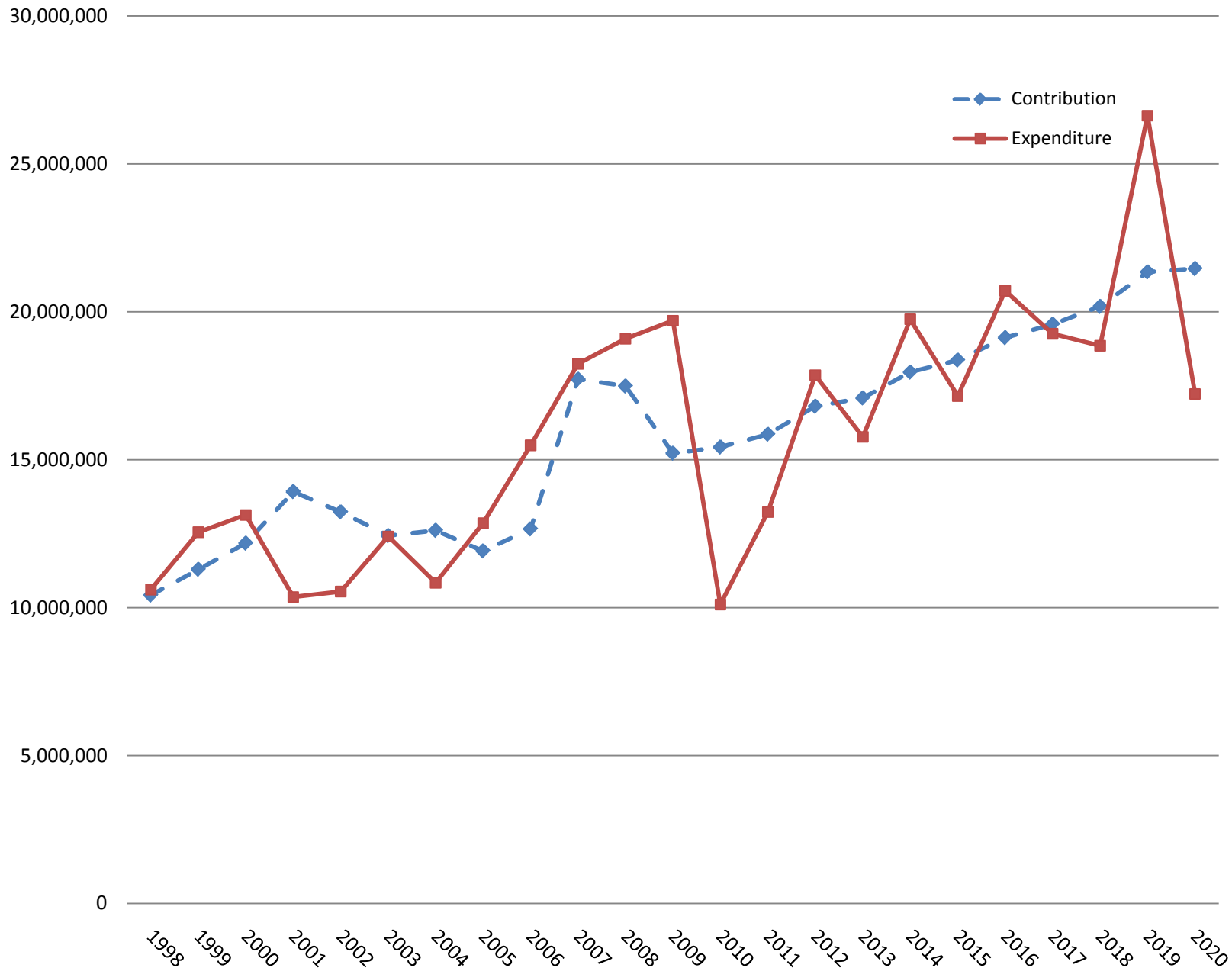
Seattle replaces vehicles at the end of their life cycles. Resulting purchase patterns cause expenditure levels to vary from year to year. Lease rates, on the other hand, are set to ensure that contribution levels remain relatively smooth, which allows departments predictable payment schedules for vehicle replacement. Contributions may thus exceed expenditures – or vice-versa – in any given year, but sufficient funds are collected over time to ensure timely vehicle replacement.

Fleet Capital Contributions and Expenditures



Contributions include department payments plus salvage proceeds; 2009-2014 projected

Fleet Capital Contributions and Expenditures



Contributions include department payments plus salvage proceeds; 2009-2020 projected