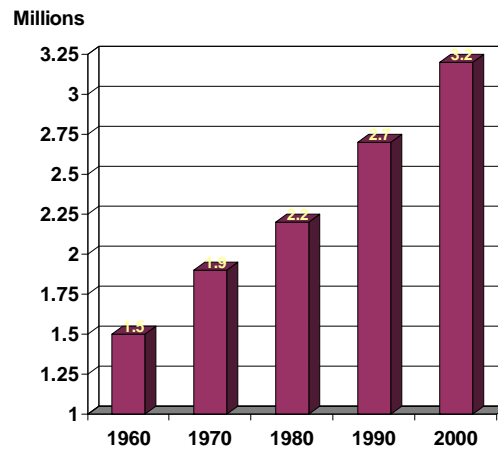
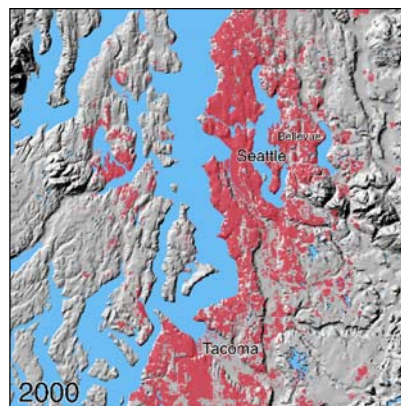
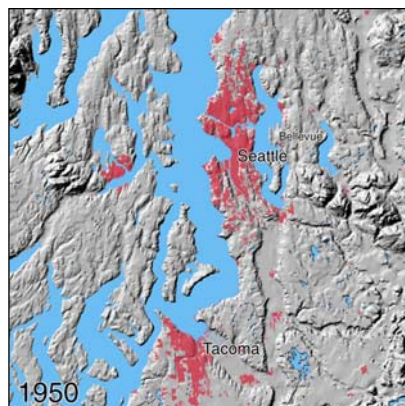
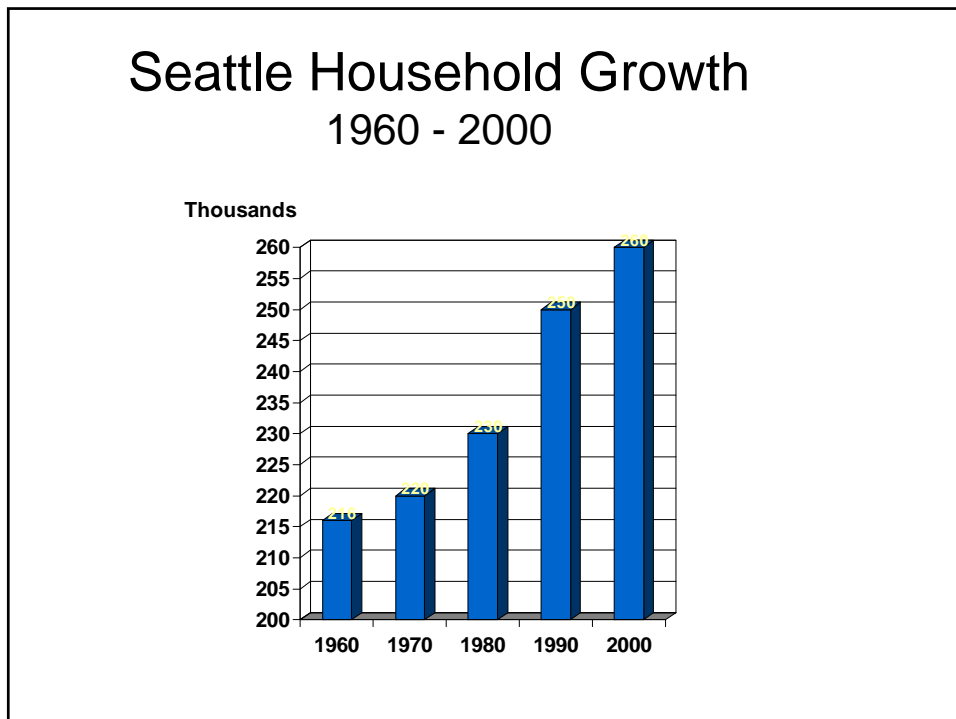
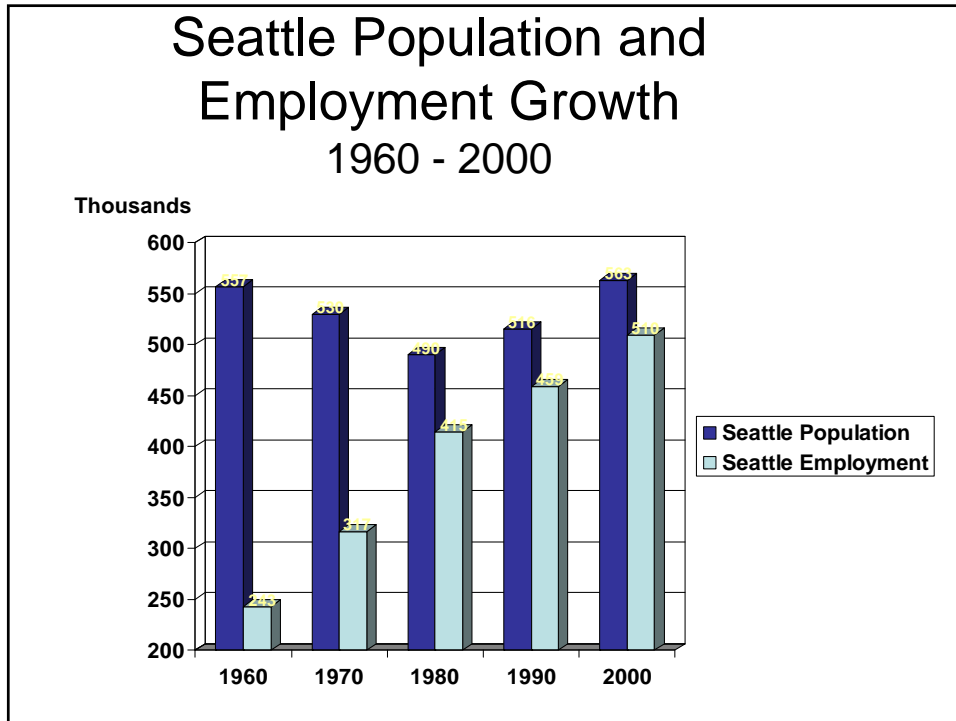


Regional Population Growth 1960 - 2000



Regional Growth Trend





GMA Goals

- Direct growth to areas where facilities exist
- Reduce sprawl
- Multimodal transportation system
- Housing affordable to all economic levels
- Economic development

GMA requirements for fully planning communities

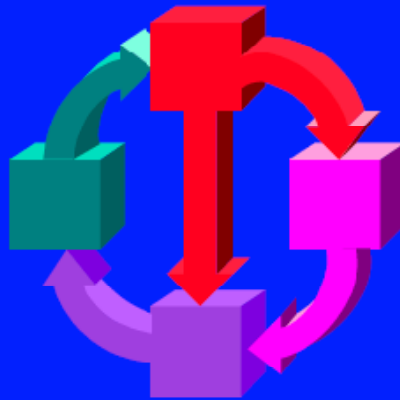
County-wide planning policies

Comprehensive plan

Development regulations

Project review

Consistency



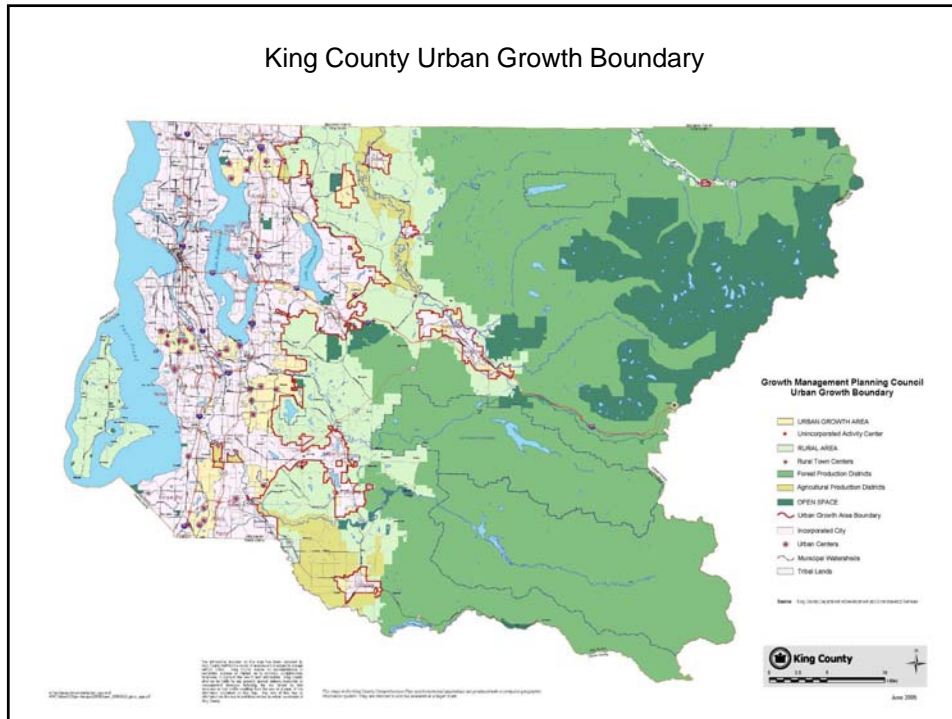
- ◆ Internal plan consistency
- ◆ Activities and capital budget decisions
- ◆ Development regulation consistency with the plan
- ◆ Project consistency with the plan and regulations

GMA Requirements - County

- Plan cooperatively with cities
- Establish urban growth boundary
- Accommodate 20-year population estimate
- Buildable Lands reporting



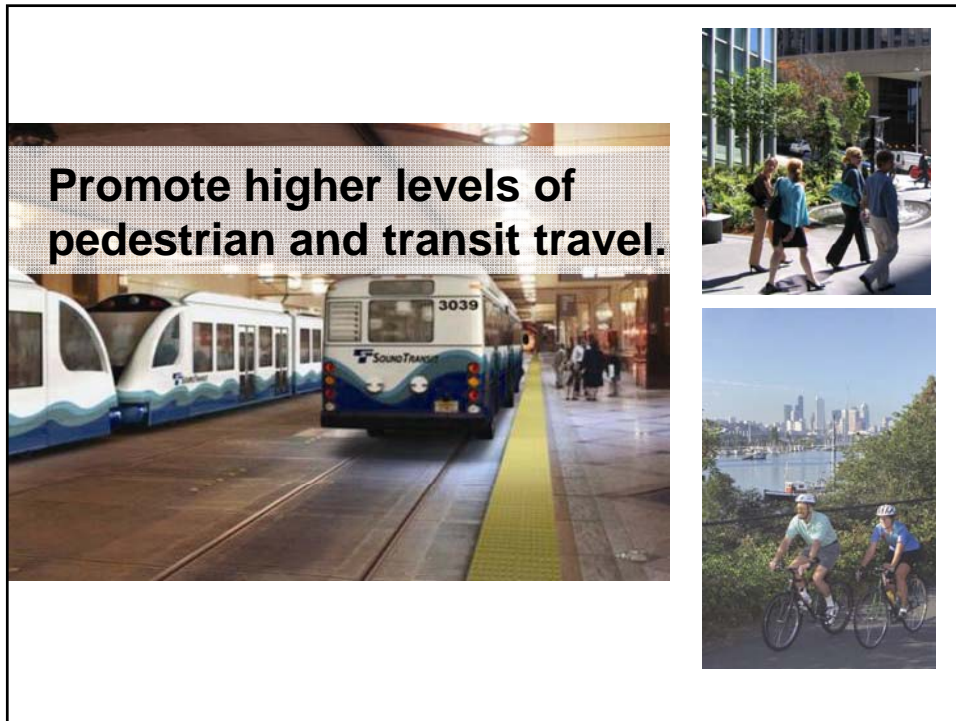
King County Urban Growth Boundary



GMA Requirements - City

- Prepare a comprehensive plan
- Consistent with multi-county and county plans
- Include specific elements (topics)
- Transportation concurrency
- All City actions must conform to Plan
- Regular updates – next in 2011
- Address critical areas and incorporate shoreline planning
- Buildable Lands Report





Since Neighborhood Plans

