

>>>>CAUTION<<<<
CALL BEFORE YOU DIG!

NOT LESS THAN TWO OR MORE THAN TEN BUSINESS DAYS PRIOR TO COMMENCING EXCAVATION OR DEMOLITION, SECURE THE SERVICES OF A COMMERCIAL UNDERGROUND UTILITIES LOCATOR SERVICE TO IDENTIFY BELOW-GROUND IMPROVEMENTS THAT MAY NOT BE INDICATED ON THE DRAWINGS. FOR IRRIGATION SYSTEMS, CALL SEATTLE PARKS PLUMBING SHOP (206 684 7070)

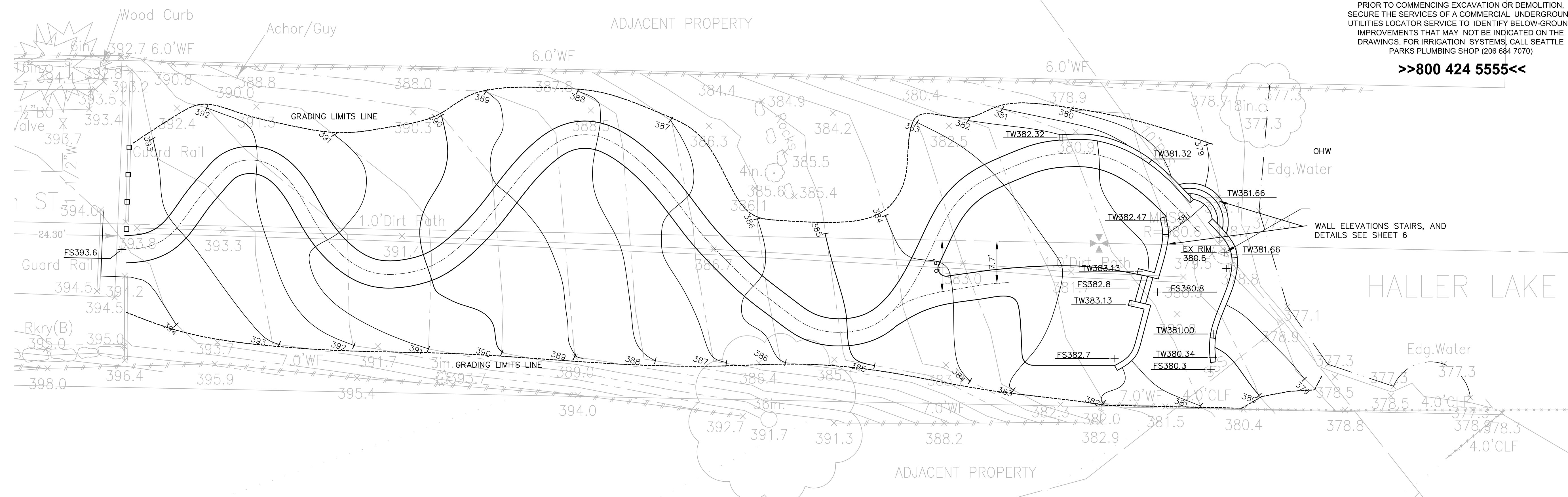
>>800 424 5555<<

GRADING NOTES:

- DATUM PER CITY OF SEATTLE, DEPARTMENT OF PARKS AND RECREATION, BASED ON CITY OF SEATTLE DATUM (NAVD 88). LOCATE, PRESERVE, AND PROTECT VERTICAL CONTROL POINT.
- PLAN SHOWS ALL FINISH GRADE ELEVATIONS. PROVIDE SUBGRADE ELEVATIONS AS REQUIRED BY PLANS, DETAILS, OR SPECIFICATIONS. PROVIDE APPROPRIATELY COMPACTED SUBGRADES OF NATIVE SOIL OR APPROVED FILL.
- COORDINATE GRADING WORK WITH WORK OF OTHER TRADES, OR WORK BY OTHERS AS REQUIRED TO COMPLETE THE PROJECT.
- EXCESS MATERIALS SHALL BE REMOVED FROM SITE AND HAULED TO AN APPROVED LOCATION.
- AFTER INSTALLATION OF PIPED SUBSURFACE DRAINAGE AND ELECTRICAL CONDUIT, IMPORT SUFFICIENT BASE SAND TO ESTABLISH A NEW SUBGRADE AT PROPOSED FINISHED GRADE MINUS 6". FOLLOWING INSTALLATION OF IRRIGATION PIPING AND HEADS, IMPORT A UNIFORM LIFT OF PLAYFIELD SOIL TO PROPOSED FINISHED GRADE.

LAYOUT NOTES:

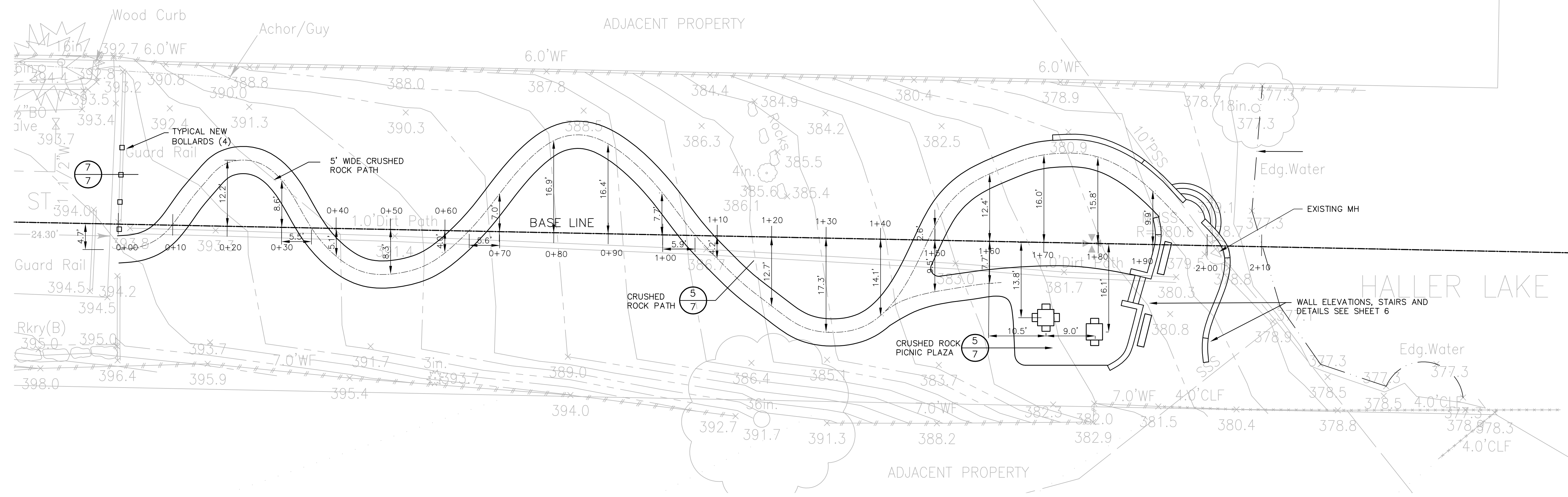
- ESTABLISH HORIZONTAL BASELINES AND OFFSET LINES PARALLEL AND PERPENDICULAR AS INDICATED FROM THE EXISTING CONTROL POINTS SET BY OWNER. VERTICAL CONTROL IS RELATIVE WITHIN THE WORKSITE. ESTABLISH SPECIFIC VERTICAL RELATIONSHIPS PRIOR TO STARTING WORK. ESTABLISH A MINIMUM OF TWO VERTICAL CONTROL POINTS AND MAINTAIN THEM THROUGHOUT THE PROJECT. THE BASELINES AND OFFSET LINES ARE TO BE ESTABLISHED AS SHOWN ON THE PLAN.
- ALL CURVED LINES INDICATED ON THE LAYOUT SHALL BE CONTINUOUS AND WITHOUT DEVIATION. ABRUPT VERTICAL OR HORIZONTAL CHANGES ARE NOT ACCEPTABLE. STAKE CONCRETE FORMS ADEQUATELY TO PREVENT SUDDEN BENDS.
- NOTIFY THE ENGINEER OF HORIZONTAL OR VERTICAL DISCREPANCIES IMMEDIATELY. DO NOT PROCEED WITH WORK WHICH MAY RESULT IN ACCUMULATED ERROR.
- NOTIFY ENGINEER OF LAYOUT DISCREPANCIES WITH ELEMENTS TO REMAIN AND PROPOSED ELEMENTS. DO NOT PROCEED WITH WORK WHICH MAY RESULT IN ACCUMULATED ERROR.
- STAKE OUT PAVING AND SITE FURNISHINGS PRIOR TO THE INSTALLATION OF THESE ITEMS. INSTALLATION MAY PROCEED AFTER SECURING APPROVAL FROM THE ENGINEER.



GRADING PLAN
 1"=10'

LEGEND:

- FG - FINISH GRADE
- FS - FINISHED SURFACE (CRUSHED ROCK)
- TW - TOP OF WALL
- BW - BOTTOM OF WALL
- OHW - ORDINARY HIGH WATER

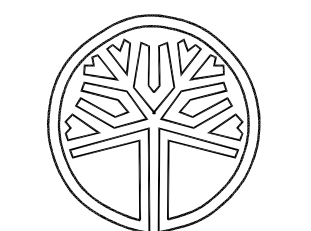


LAYOUT PLAN
 1"=10'

NO.	REVISION - AS BUILT	DATE
3		
2		
1		

REVIEWED: PARK ENGINEER DATE

All work done in accordance with the City of Seattle Standard Plans and Specifications in effect on the date shown above, and supplemented by Special Provisions.



STATE OF WASHINGTON
 REGISTERED
 LANDSCAPE ARCHITECT
 RANDALL F. ROBINSON
 CERTIFICATE NO.505



HALLER LAKE

COMMUNITY STREET END

GRADING PLAN & LAYOUT PLAN

DESIGNED RR	DATE MAY 2007
DRAWN RR	SHEET 4 OF 8
CHECKED JN	
ORDINANCE NO. 121947	Sht. No.
CONTRACT NO. X	
SCALE 1"=10'	