

northgate urban center park development

community workshop three

seattle, washington

june 25, 2008

MITHÜN

ARCHITECTS + DESIGNERS + PLANNERS



SEATTLE PARKS
AND RECREATION

CONTENTS

Meeting Agenda and Summary

Program Summary Diagram

Vision Plan

Elements

Activities

Views

Phase I



community workshop three

Proview Submission does not include list of attendees.
FINAL DRAFT TO INCLUDE LIST OF MEETING ATTENDEES

SUMMARY

The third and final community meeting for the Northgate Urban Center Park Development presented a vision plan and phasing option, as well as art opportunities for the park. The plans were developed with the input from the previous two community meetings, two reviews by Seattle Parks Preview, and one review by the Seattle Design Commission. This meeting also provided the first public introduction of the artist team, Haddad-Drugan, to the community and allowed the artists to share some of their developing ideas for the park. Community members provided both written and verbal feedback to the design team; overall there was a warm reception to the vision plan, with some concern about the need for phased construction.

Northgate Urban Center Park Development
Community Meeting - workshop three
AGENDA

Wednesday, June 25, 2008 from 6:30 – 7:30 PM
Northgate Community Center

Meeting Goals: Note that each meeting builds upon the last.
Goal from Community Workshop #1, Feb. 20: To listen to and gather information, goals and vision from you, the Northgate community, as we begin exploring the possibilities for your new Northgate Urban Center Park.
Goal from Community Workshop #2, April 12: To gather preferences and comments regarding the various design concepts which were created by the vision that was shaped through community input.
Goal for TODAY: To present a preferred full site development plan and a phase one plan based on input received from meeting #2, additional outreach, Project Advisory Team comments, Design Commission comments and Parks comments. To hear additional comments on the design.

6:30 – 6:35 PM Sign-In

6:35 – 6:40 PM Welcome and Project Overview, Kim Baldwin, Seattle Parks

- Introductions
- Housekeeping Items
- Project History, Schedule & Budget
- Re-cap of Community Meeting #2
- Today's Agenda

6:40 – 7:00 PM Presentation of Design Concepts & Art, Mithun/Haddad-Drugan

7:00 – 7:20 PM Activity, All

- Please Move to Comment Stations

7:20 – 7:30 PM Open Comment Period

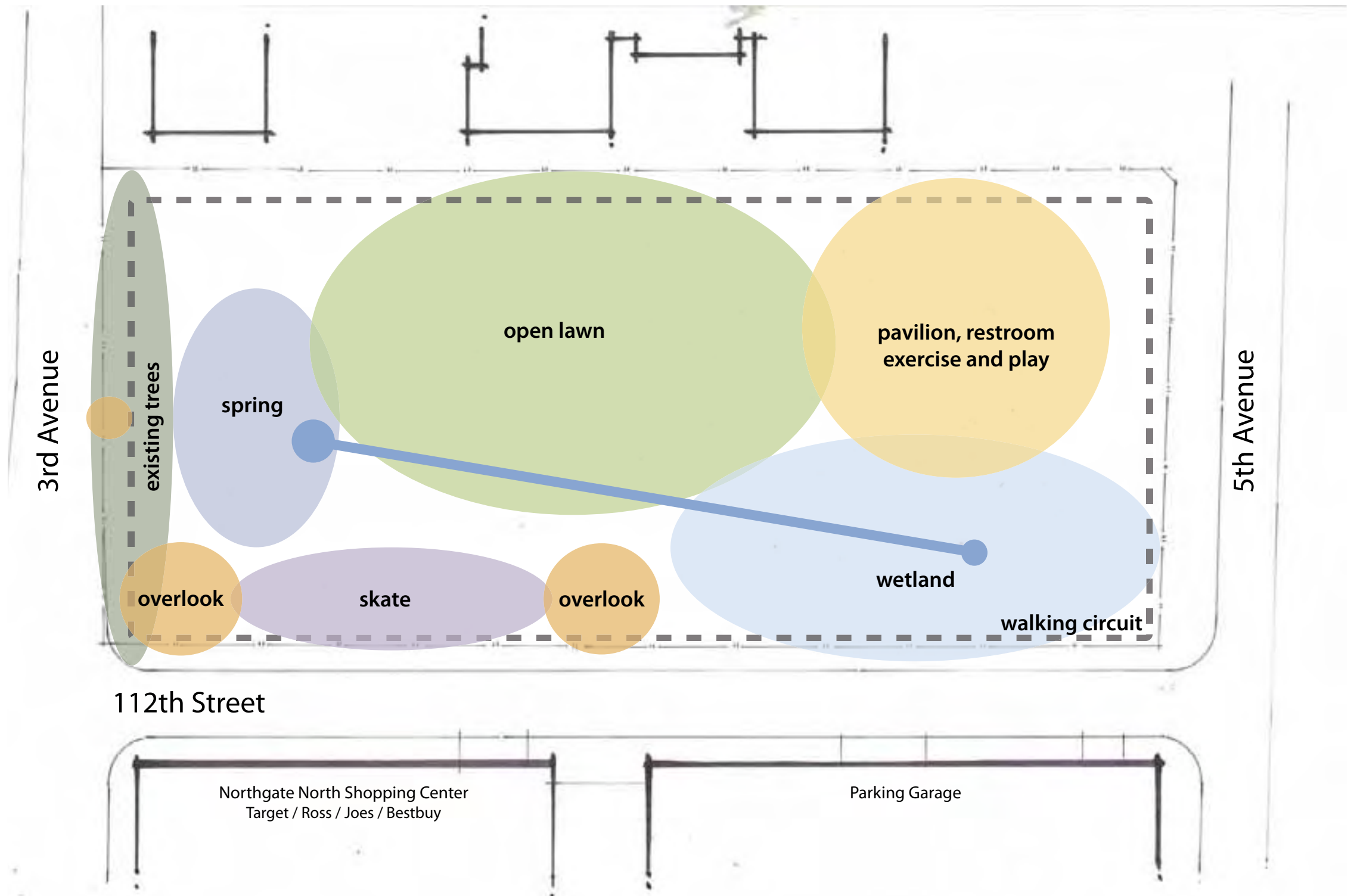
Next Steps: The design team will finalize the two concepts shown today based upon comments received at this community meeting and other outreach efforts. These plans will also be brought to the Parks Department and Design Commission for review. Updated drawings will be posted on the project website.

Thank you for your insight and participation today. It is your ideas that will guide the design and transformation of your new park!

program summary diagram

PROGRAM SUMMARY DIAGRAM

The adjacent program summary diagram for Northgate Urban Center Park was developed through an outreach process that included community interviews, two community meetings, Project Advisory Team input, a CulturalAudit™ and input from Seattle Parks, as documented in the reports for Community Meetings #1 and #2. This diagram incorporates comments on the three design concepts presented in Community Meeting #2 and provides the basis for both the final Vision Plan and the Phase 1 design.

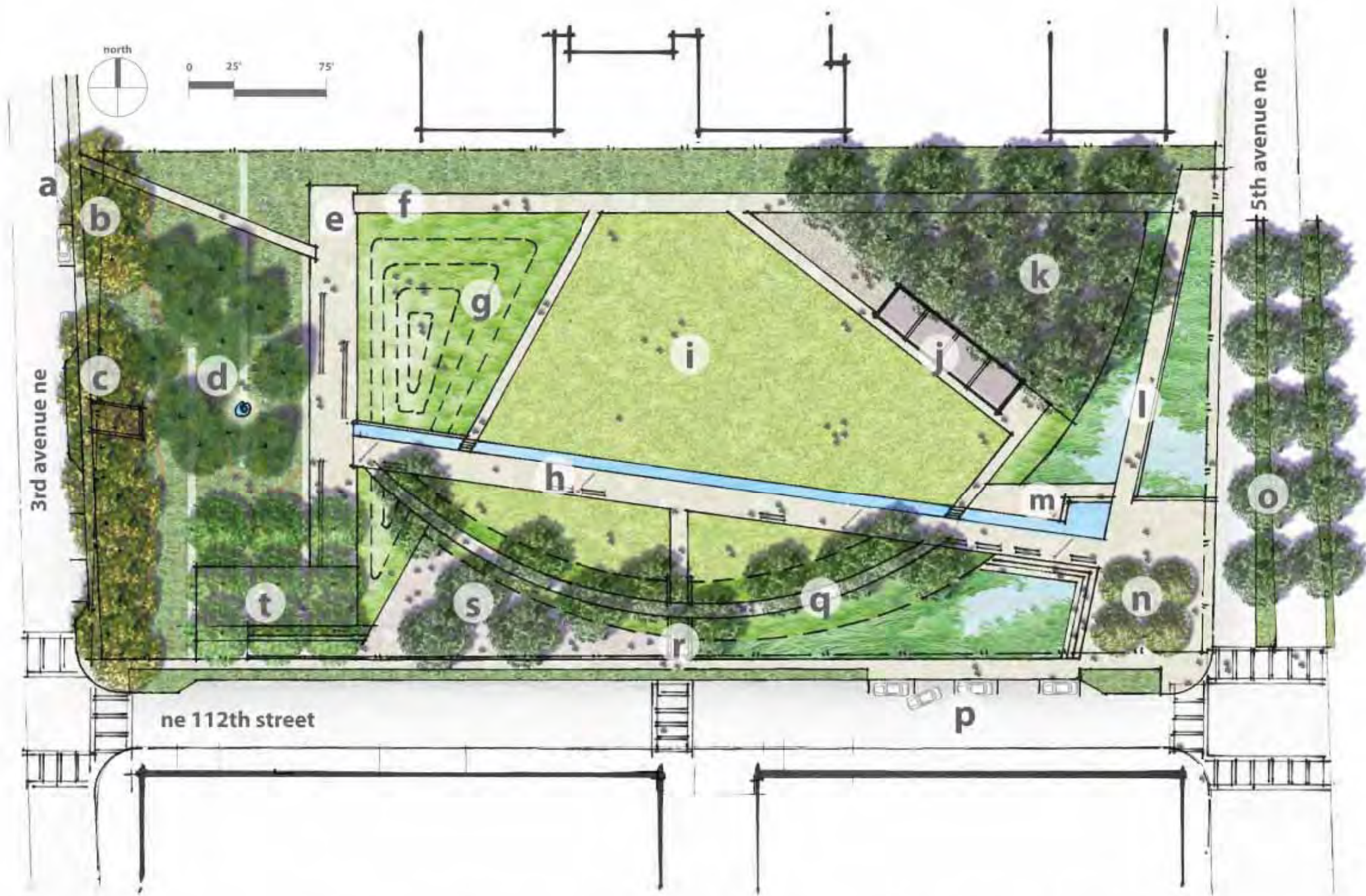


VISION PLAN | description

Northgate Urban Center Park will draw upon the site's rich history and hydrological conditions. The focus of the park is its historic spring, which will be set within a grove of tall conifers adjacent to the existing trees on the western portion of the site. The spring carries a sense of mystery, and the idea of beginning. Its flow provides a conceptual relationship to the past and future. Leading to the spring, the 'blue streak' is a linear water element named after the first park-n-ride that occurred on this site. The blue streak provides a tactile water experience, and depending upon underlying hydrological conditions, may be supported by spring water or rainwater. Its color and materials will vary along its length, transitioning from more solid on the east, toward more reflective and ephemeral as it approaches the spring. The blue streak terminates at the lowest point in the site, within a wetland habitat. The wetland flanks the path into the site at the southeastern corner of the site, creating a gateway, and continues along 5th Avenue, providing a contrast to the urban character of the street. The wetland and proposed trees along the street provide a lush gateway to the neighborhood.

Landforms within the park provide spatial separations between the lawn, spring and skate park. Restrooms are housed within the northeast grove, adjacent to the play area. Existing parking is maintained along 3rd Avenue, and new parking with bulb-outs is proposed along 112th Street.

The total project budget associated with the vision plan is between \$7 and \$8 million.



legend: a) 3rd avenue improvements b) existing trees c) overlook to spring d) spring and art elements in grove of conifers e) plaza at spring f) perimeter walking path g) earthform h) blue streak promenade i) open lawn j) pavilion with restrooms k) play and exercise amenities beneath bosque of trees l) wetland m) spring counterpoint n) entry plaza o) 5th avenue improvements p) accessible on-street parking q) landform with overlook path r) access point s) skate t) homestead viewing area and park entry

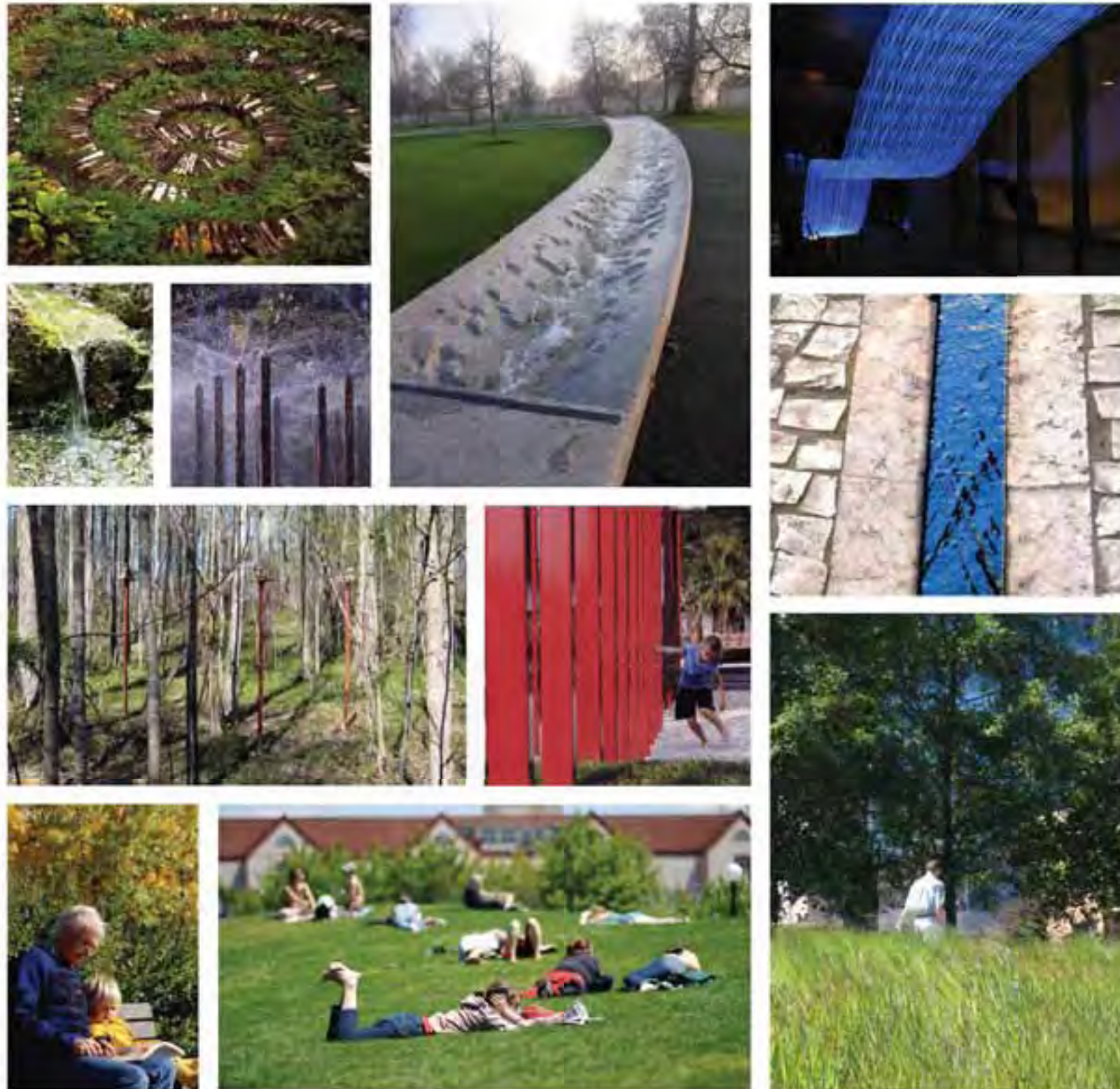
elements



MITHUN

CHARACTER IMAGES

The following images were presented to describe the character associated with the project elements. These elements are used for inspiration and guidance in the development of a materials palette for the project, and in the development of distinct spaces united by an overall character.



not for publication



activities



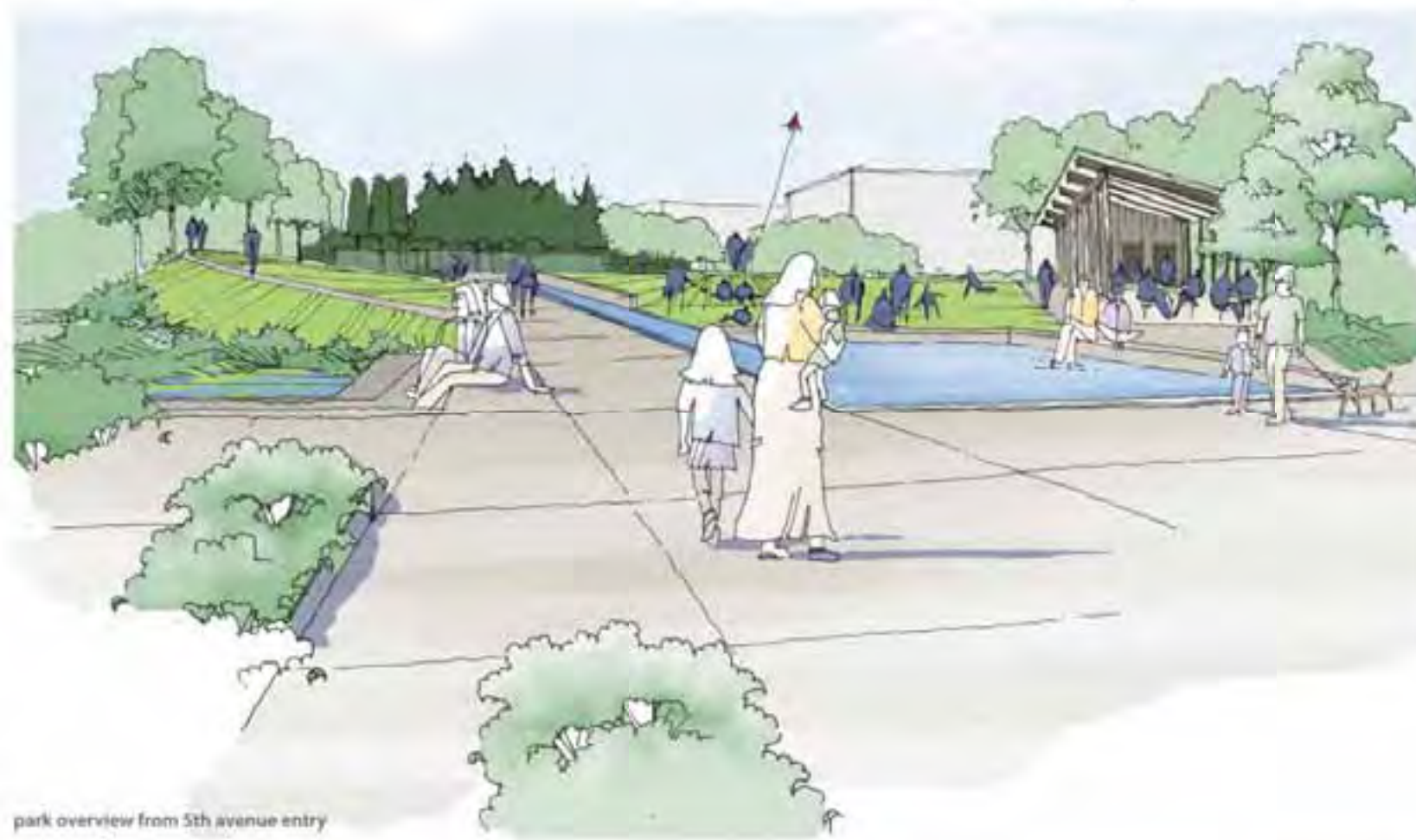
MITHUN



not for publication



MITHUN



park overview from 5th avenue entry



section of 3rd avenue improvements and overlook



view from overlook

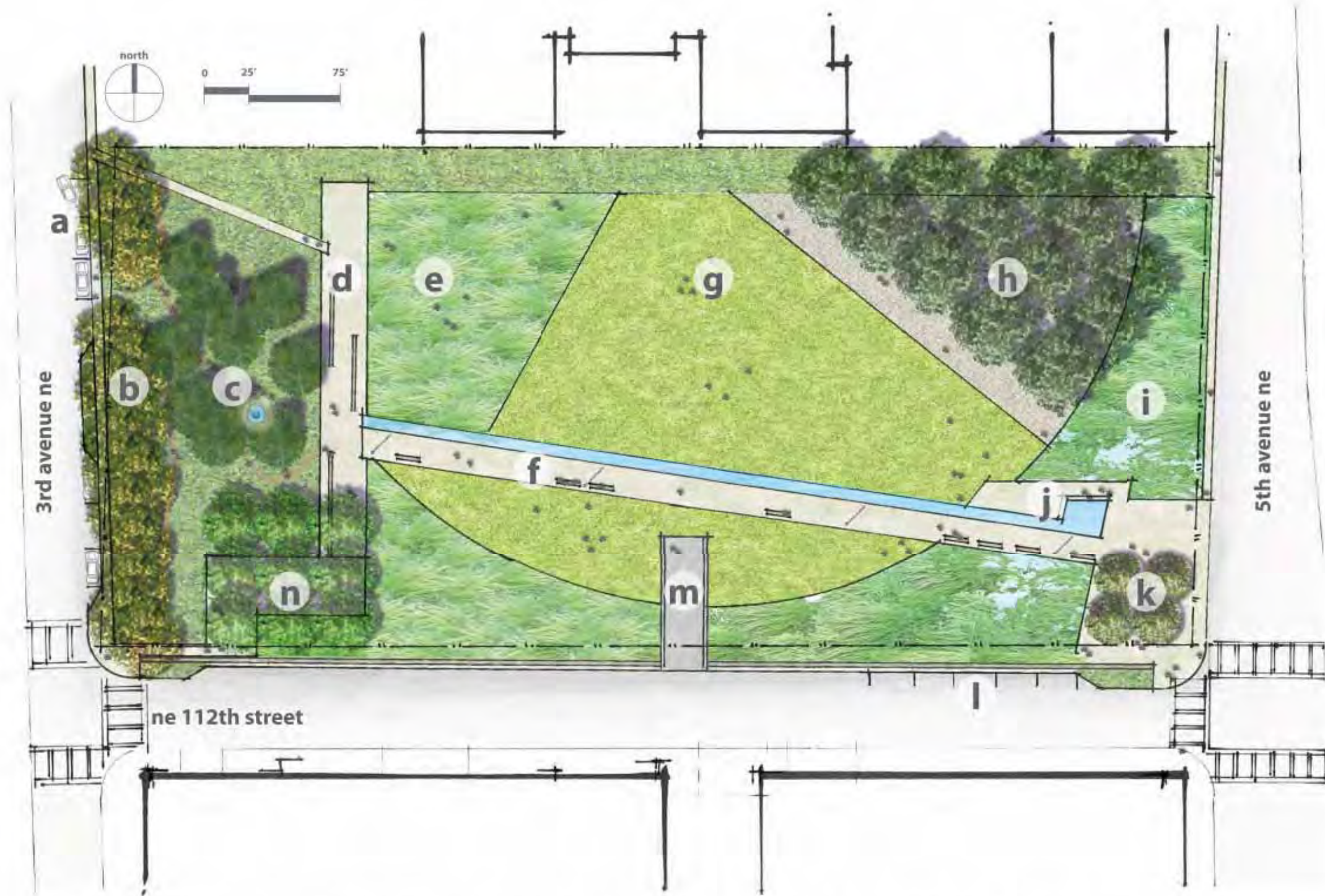
not for publication

PHASE 1 PLAN | description

Phase 1 is based on the current approved total project budget of \$4 million. This phase will include the spring and associated planting, the blue streak, the main lawn, play groves at the northeast, a grove at the Hubbard homestead site, meadow planting surrounding the lawn, a hydroseeded wet meadow and gateway plaza at 112th Street and 5th Avenue, and park paths that help to define and provide accessible connections to the main program spaces within the park.

Vision plan elements that are not included in this phase are the restroom, skate park, landforms, removal of the mid-block ramp on 112th Street, walkways along the north and south edges of the site, and the spring overlook and access path from 3rd avenue.

Community comments included a desire to include the landforms, skate park and restrooms in this phase.



legend: a) 3rd avenue improvements b) existing trees c) spring and art elements in grove of conifers d) plaza at spring e) unmown meadow f) blue streak promenade g) open lawn h) play and exercise amenities beneath bosque of trees i) wetland j) spring counterpoint k) entry plaza l) potential on-street parking m) maintain existing asphalt ramp n) homestead viewing area and park entry