

GREEN BACKDROP
綠的背景

SHELTER LOCATION
涼亭

DRAGON IN SAND
龍 置於沙堆內

TABLES & CHAIRS
桌椅

EXISTING WALL
保留現有的圍牆

LAWN
草坪

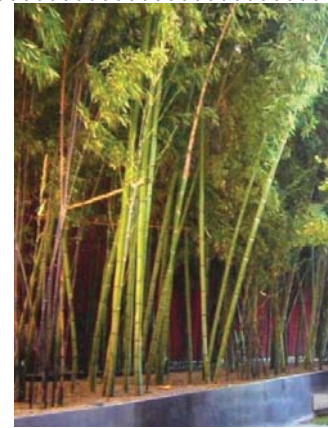
TAI CHI/
GATHERING AREA
太極或聚會場所

SEAT WALL
可坐的矮牆

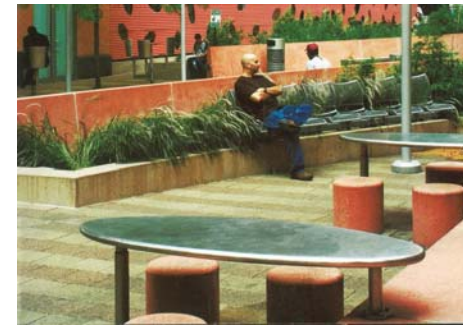
LOOP WALK
繞園步道



DRAGON AND GREEN BACKDROP



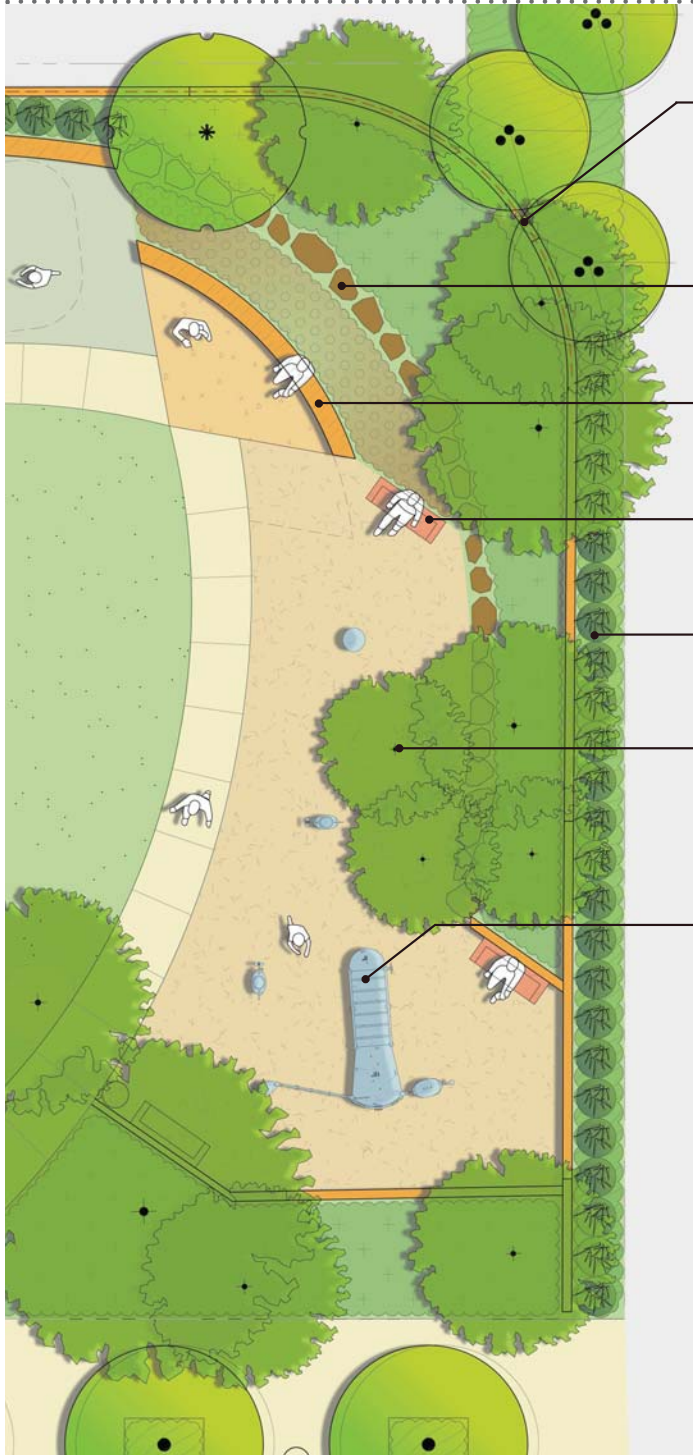
SEATING AND SHELTER



LAWN



PLAZA FOR TAI CHI / GATHERING AREA



SCREEN FENCE
圍籬
裝置在現有圍牆上

STONE WALL
石牆

SEAT WALL
可坐的矮牆

PARK BENCH
公園座椅 有椅背

GREEN BACKDROP
綠的背景

**EXISTING TREE
TO REMAIN**
保留現有樹木

**PLAY EQUIPMENT IN
PLAY SURFACING**
遊樂器材
置於安全鋪地上



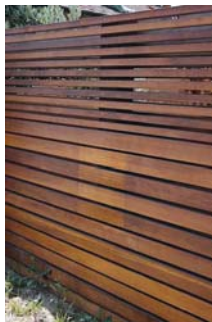
SEAT WALL AND ROCKERY WALL



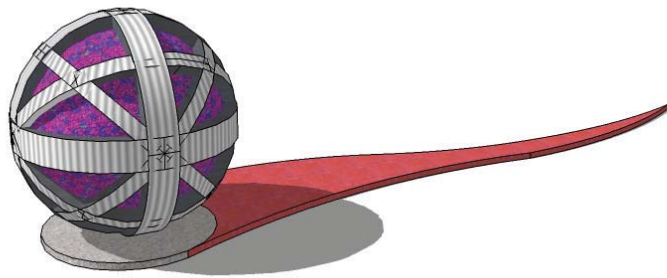
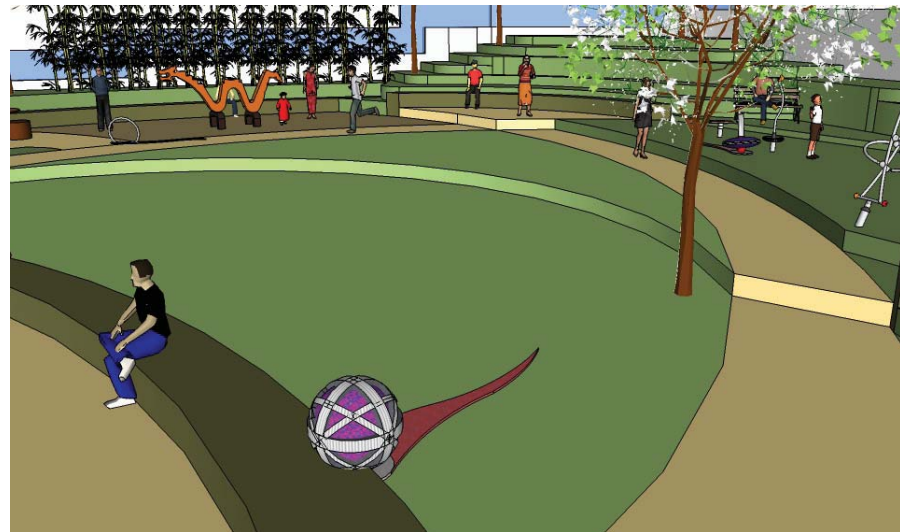
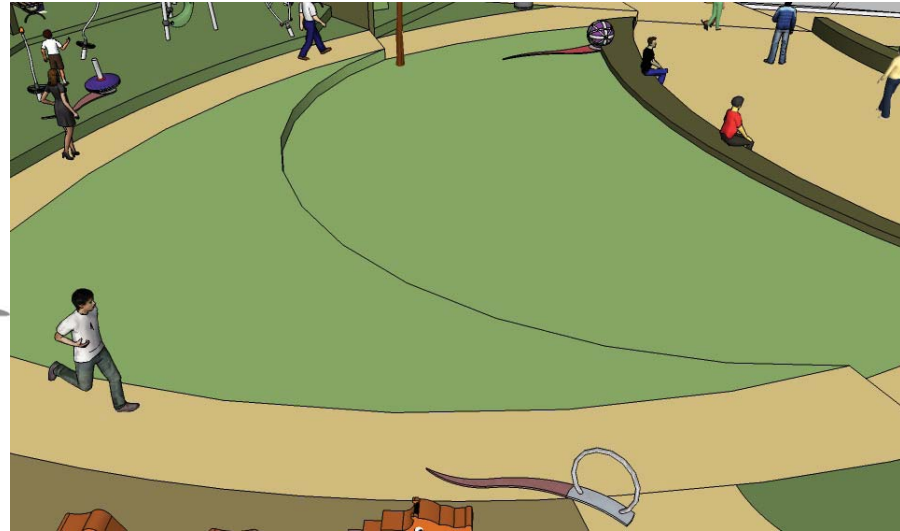
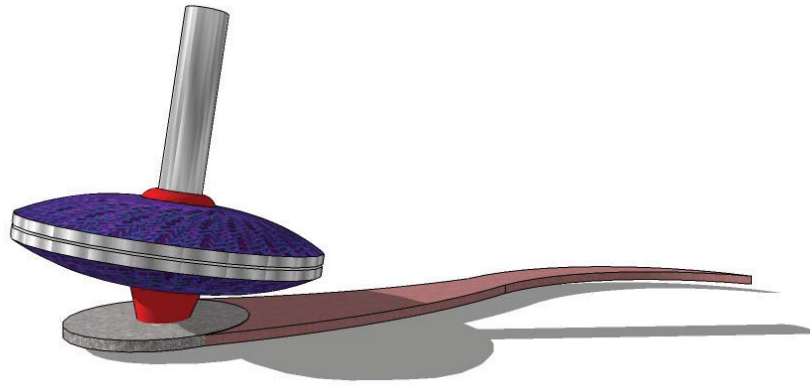
PARK BENCH

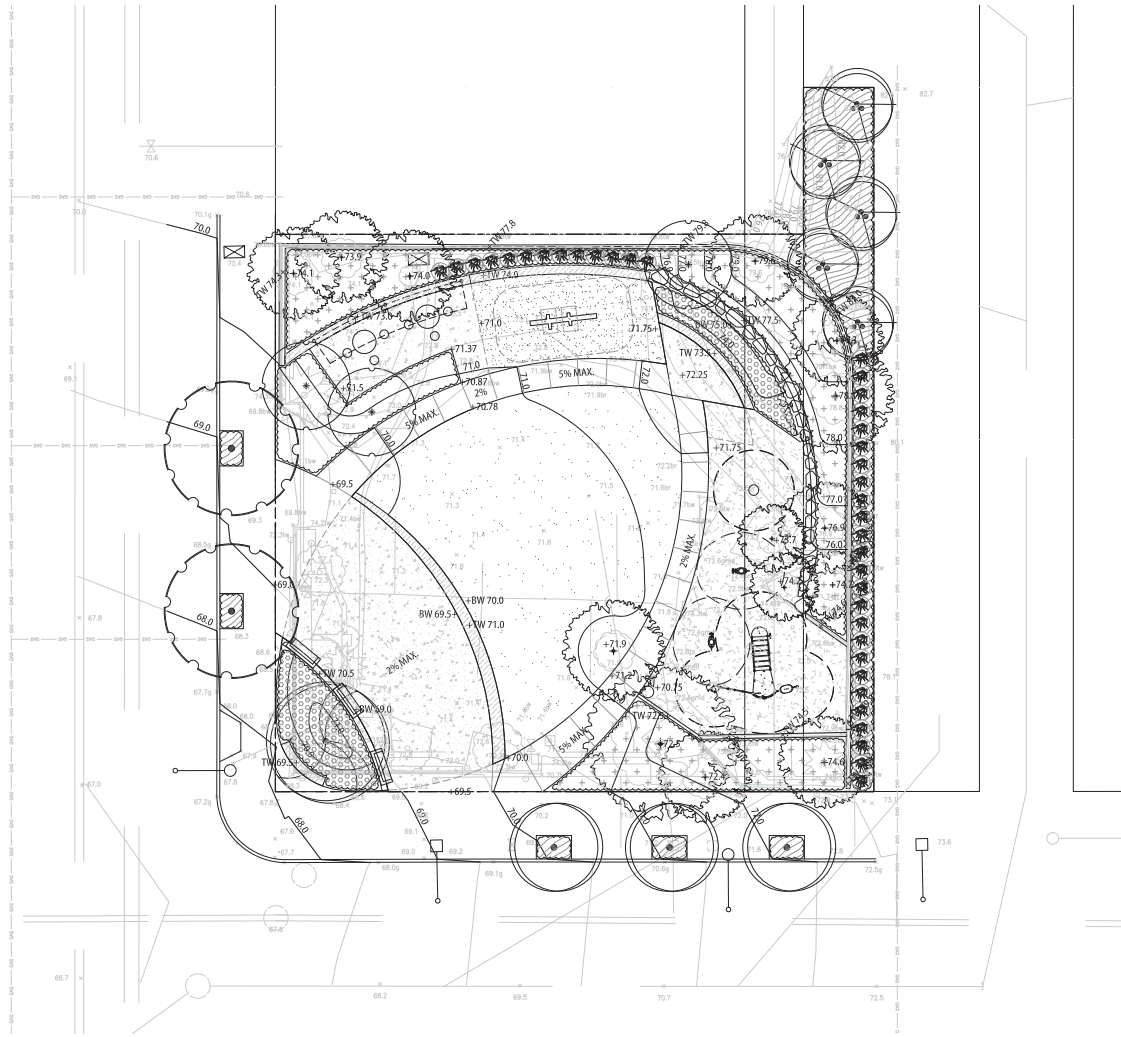


SPECIAL PAVING
AT PLAZA



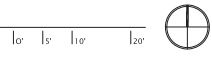
SCREEN FENCE &
GREEN BACKDROP





LANDSCAPE PLAN

SCALE: 1" = 10'

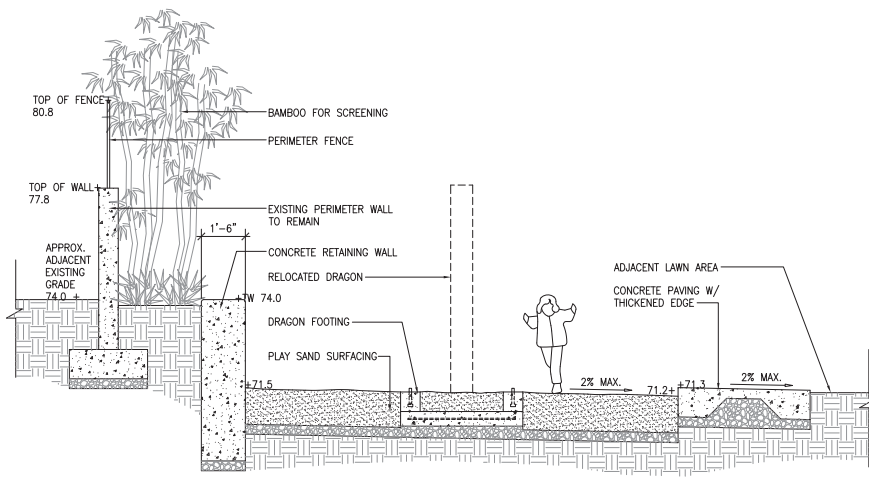


INTERNATIONAL
 CHILDREN'S
 PARK

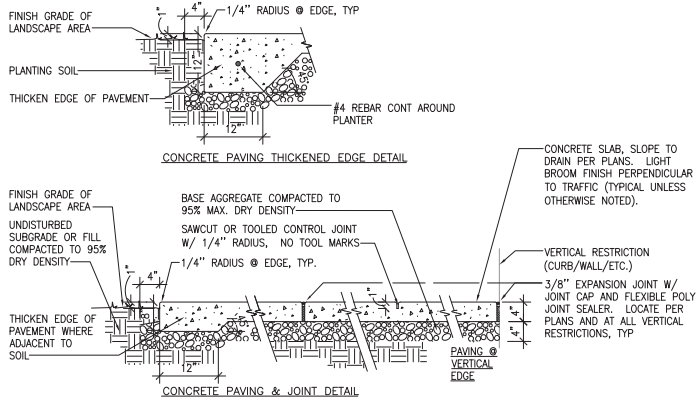
DESIGN DEVELOPMENT

job no: IDCP
 file name:
 scale:
 date: MAY 2010

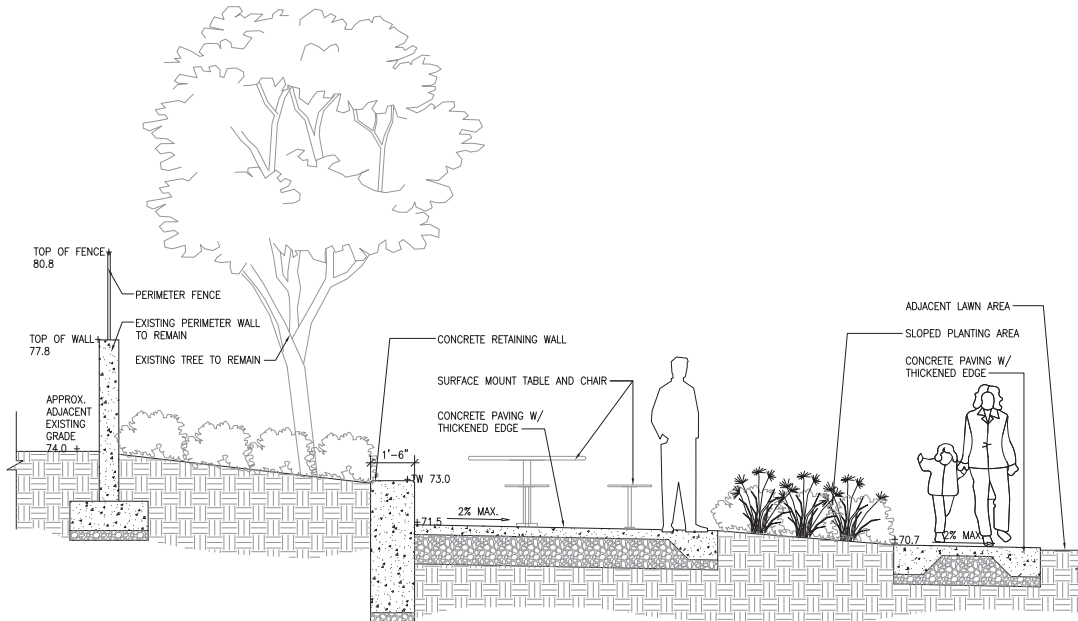
issue: _____ date: _____
 sheet: _____



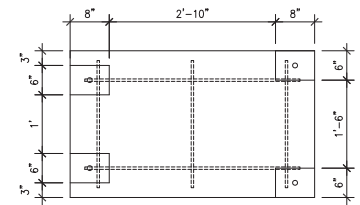
SECTION THROUGH SAND DRAGON AREA
SCALE: 1/2" = 1'-0"



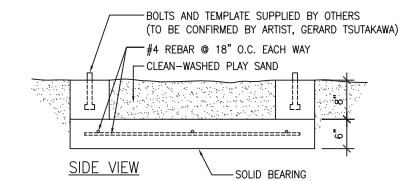
CONCRETE PAVING W/ THICKENED EDGE
SCALE: 1" = 1'-0"



SECTION THROUGH PICNIC AREA
SCALE: 1/2" = 1'-0"

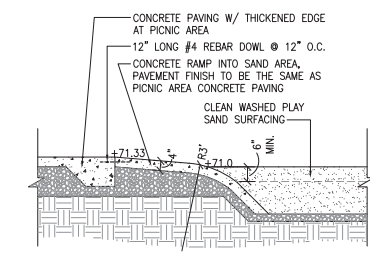


PLAN VIEW



SIDE VIEW

SAND DRAGON BASE
SCALE: 1" = 1'-0"



WARP PAVEMENT EDGE INTO SAND AREA
SCALE: 1/2" = 1'-0"

>>>>CAUTION<<<<
CALL BEFORE YOU DIG!
 NOT LESS THAN TWO OR MORE THAN TEN BUSINESS DAYS PRIOR TO COMMENCING EXCAVATION OR DEMOLITION, SECURE THE SERVICES OF A COMMERCIAL UNDERGROUND UTILITIES LOCATOR SERVICE TO IDENTIFY BELOW-GROUND IMPROVEMENTS THAT MAY NOT BE INDICATED ON THE DRAWINGS. FOR IRRIGATION SYSTEMS, CALL SEATTLE PARKS PLUMBING SHOP (206 684 7070)
>>800 424 5555<<

DESIGN DEVELOPMENT



STATE OF WASHINGTON
 REGISTERED
 LANDSCAPE ARCHITECT
 KAREN S. KIEST
 CERTIFICATE NO. 850

| 3 | | |
|-----|---------------------|------|
| 2 | | |
| 1 | | |
| NO. | REVISION - AS BUILT | DATE |

APPROVED FOR ADVERTISING:
 Linneth Riley-Hall
 Director of Contracting Services Division
 Seattle, Washington 20
 By: _____
 Director, Contracting Services Division

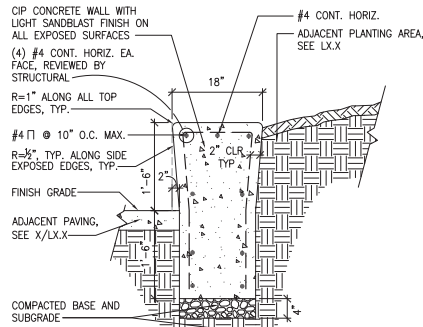
REVIEWED: _____ DATE _____
 PARK ENGINEER
 All work done in accordance with the City of Seattle Standard Plans and Specifications in effect on the date shown above, and supplemented by Special Provisions.

KAREN KIEST | landscape architects
 111 west john street, suite 305
 seattle washington 98119
 tel: 206.323.6032

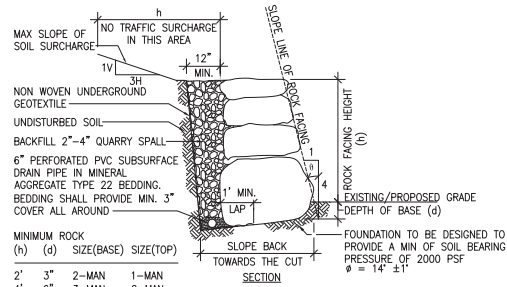


**INTERNATIONAL CHILDREN'S PARK
 PARK DEVELOPMENT**

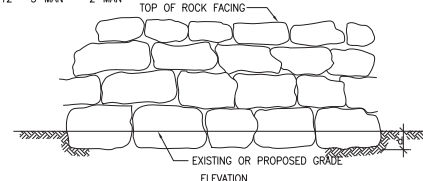
| | |
|---------------------|----------------------|
| DESIGNED _____ | DATE JULY 2010 |
| DRAWN _____ | |
| CHECKED _____ | SHEET _____ OF _____ |
| ORDINANCE NO. _____ | |
| CONTRACT NO. _____ | |
| SCALE _____ | |



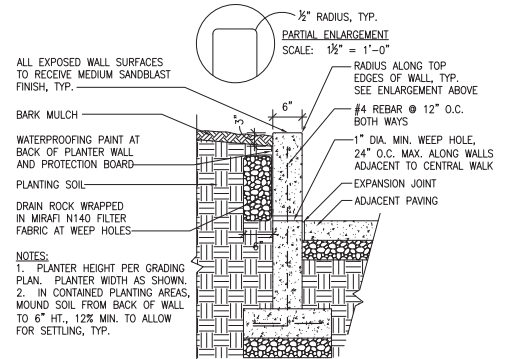
CIP CONCRETE RETAINING SEAT WALL
SCALE: 1" = 1'-0"



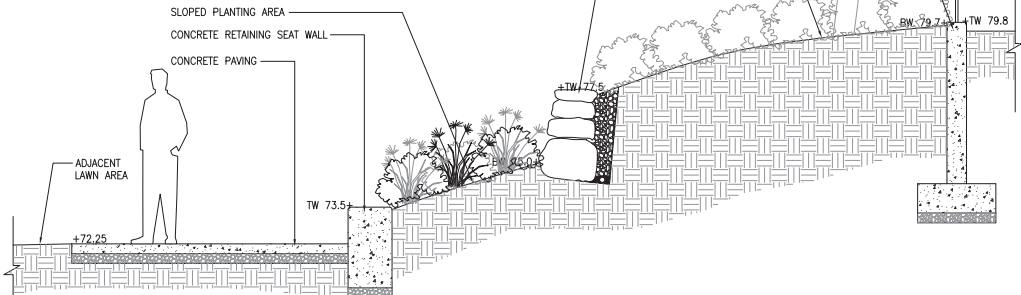
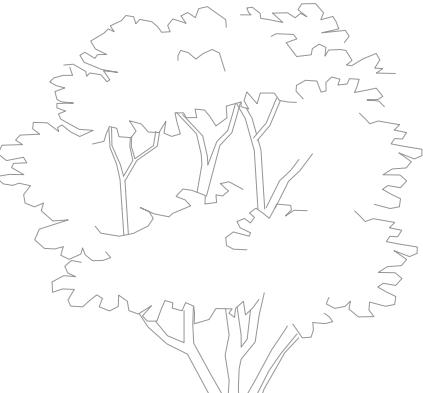
SECTION
TOWARDS THE CUT



ROCKERY WALL
SCALE: NTS



RETAINING PLANTER WALL
SCALE: 1" = 1'-0"



SECTION THROUGH UPPER PLAZA AND ROCKERY
SCALE: 1/2" = 1'-0"

>>>>CAUTION<<<<
CALL BEFORE YOU DIG!

NOT LESS THAN TWO OR MORE THAN TEN BUSINESS DAYS PRIOR TO COMMENCING EXCAVATION OR DEMOLITION, SECURE THE SERVICES OF A COMMERCIAL, UNDERGROUND UTILITIES LOCATOR SERVICE TO IDENTIFY BELOW-GROUND IMPROVEMENTS THAT MAY NOT BE INDICATED ON THE DRAWINGS. FOR IRRIGATION SYSTEMS, CALL SEATTLE PARKS PLUMBING SHOP (206 684 7070)

>>800 424 5555<<

DESIGN DEVELOPMENT



STATE OF WASHINGTON
REGISTERED
LANDSCAPE ARCHITECT
KAREN S. KIEST
CERTIFICATE NO. 850

| 3 | | |
|-----|---------------------|------|
| 2 | | |
| 1 | | |
| NO. | REVISION - AS BUILT | DATE |

APPROVED FOR ADVERTISING:
Linneth Riley-Hall
Director of Contracting Services Division
Seattle, Washington 20
By: _____
Director, Contracting Services Division

REVIEWED: _____ DATE _____
PARK ENGINEER
All work done in accordance with the City of Seattle Standard Plans and Specifications in effect on the date shown above, and supplemented by Special Provisions.

KAREN KIEST | landscape architects
111 west john street, suite 305
seattle washington 98119
tel: 206.323.6032



INTERNATIONAL CHILDREN'S PARK
PARK DEVELOPMENT

| | | |
|------------------|-------|-----------|
| DESIGNED | DATE | JULY 2010 |
| DRAWN | SHEET | OF |
| CHECKED | | |
| ORDINANCE NO. -- | | |
| CONTRACT NO. -- | | |
| SCALE | | |