

Hahn, Peter
Director
684-5000

Ness, Rosemary
 Executive Assistant
 684-5026

Sheridan, Rick
 Communications Manager
 684-8540
 ROAD Line

Swab, Cheryl
 Legislative Liaison
 386-1831

VACANT
 Deputy Director
 Race and Social Justice Office
 Climate Action Plan

Sparrman, Goran
 Deputy Director
 684-3121

Vacant
 Strategic Advisor

RESOURCE MANAGEMENT
Crawford, Lenda
Director
684-5350
 Accounting Services & Payroll
 Facilities & Communication
 Systems
 Financial Systems
 Fleet Management
 Information Systems Operating
 Budget
 Risk Management
 Safety
 TCIP Finance

HUMAN RESOURCES
Chinn, Evan
Acting Director
386-1139
 AA/ADA/EEO
 Disciplinary Actions & Tracking
 Drug Free Workplace
 Hiring & Recruiting
 Issues and Investigations
 Labor Relations Coordination
 Personnel Services
 Records, Benefits, & Leave
 Management
 Training & Development

STREET USE & URBAN FORESTRY
Gray, Barbara
Director
684-5572
 Management and Enforcement of the
 Activities and Uses of Public Rights of
 Way.
 Permitting, Plan Review, Approval &
 Inspections
 Including but not limited to:
 Street Improvement Permits
 Street Use Permits
 Annual & Term Permits
 Utility Permits
 Utility Coordination
 Street Vending Permits
 Sidewalk Café Permits
 Shoreline Street Ends
 Block Party Permits
 Urban Forest Management
 Arborist
 Landscape Design, Review
 & Inspections
 Landscape & Tree Maintenance

STREET MAINTENANCE
Pratt, Steve
Director
684-5319
 Emergency Response
 (24-hr dispatch)
 Equipment Pool
 Landslide Response
 Maintenance
 Program/Project Mgmt.
 Maintenance Project
 Specifications & Estimates
 Pavement
 Engineering & Mgmt.
 Snow & Ice Control
 Storm Response & Clean-up
 Street Cleaning
 Street Hazard Mitigation
 Street Preservation & Restoration
 Utility Cuts Restoration
 Vegetation Control

CAPITAL PROJECTS & ROADWAY STRUCTURES
Terrell, Mike
Director
684-3078
 Moveable Bridge Operations
 Structure Engineering, Inspection &
 Maintenance
 Structure Emergency Response &
 Repair
 Retaining Wall & Stairway Rehabilitation
 Landslide and Areaway Records &
 Hazard Mitigation
 Capital Project Management & Public
 Info
 Roadway, Drainage, Signal, Lighting &
 Structural Design
 CADD & Base Mapping Services
 Contract Specifications & Estimates
 Construction Management
 Project Control & Reporting
 Consultant Contracting
 Environmental Permitting & Compliance
 Environmental Management System
 Real Property Acquisition & Dedications
 Street Vacations

TRAFFIC MANAGEMENT
Bookman, Charles
Director
684-5097
 Arterial Traffic Operations
 Neighborhood Traffic Operations &
 Traffic Calming
 Freight Program
 Bicycle & Pedestrian Programs
 Signs & Markings Maintenance
 Parking Operations
 Curb Space Management
 Construction & Special Events Traffic
 Control
 Traffic & Parking Permits
 Traffic Data & Records
 Signals Installation & Maintenance
 Signal Operations & Timing
 Intelligent Transportation Systems
 Traffic Management Center

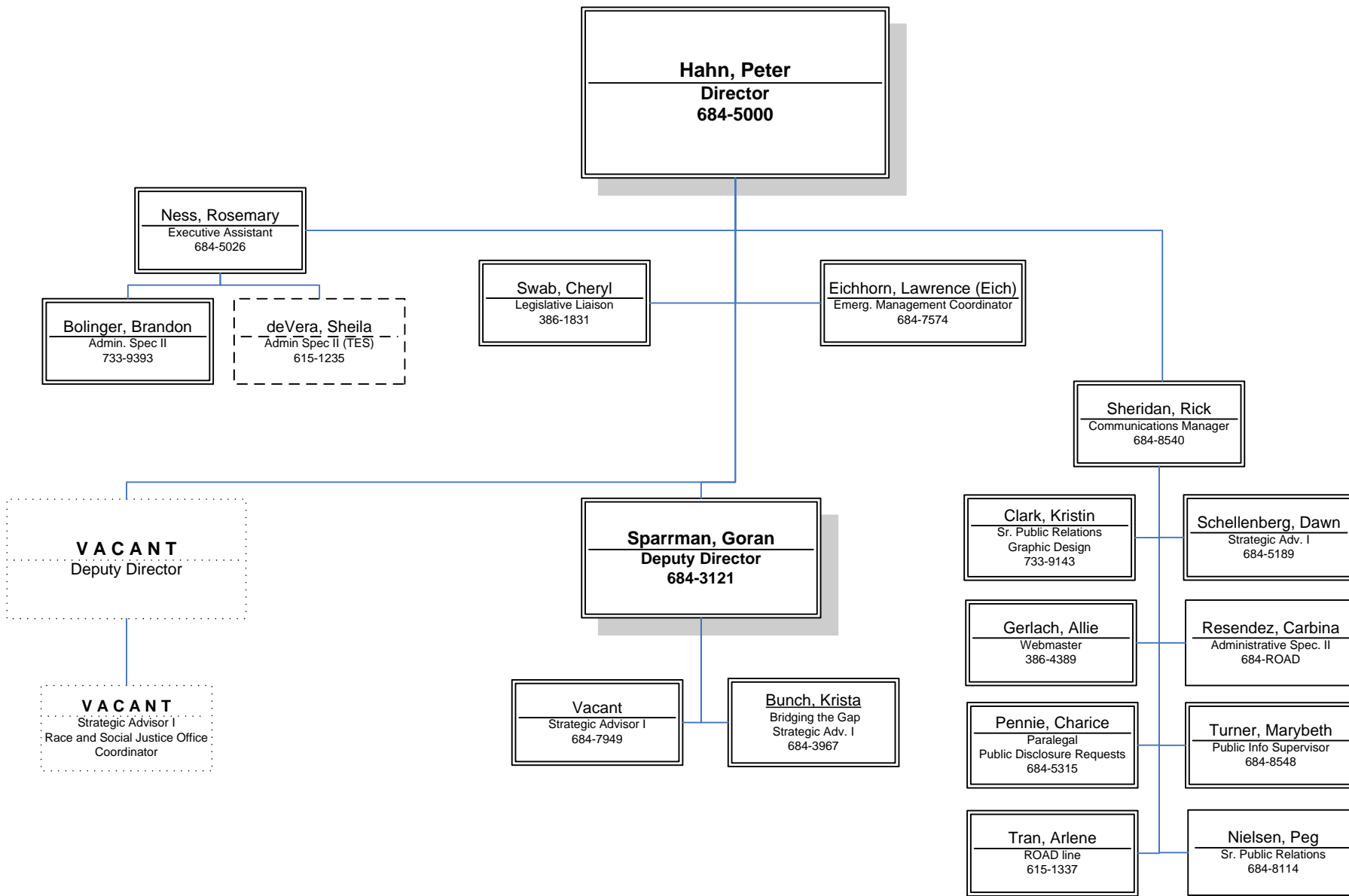
POLICY & PLANNING
Krawczyk, Tracy
Director
733-9329
 Capital Programming
 Revenue Development
 Regional Planning
 Transit Programs
 Freight Planning
 Transportation Demand Mngmt
 Program
 Trip Reduction Programs
 Parking Program
 Complete Streets
 Urban Design
 Modal & Neighborhood Planning
 GIS Analysis
 Travel Demand Modeling
 Asset Management
 Sustainable Trans
 Climate Change

MAJOR PROJECTS
Chandler, Bob
Director
684-7595
 Alaskan Way Viaduct
 And Seawall Replacement
 King Street Station
 Sound Transit
 First Hill Streetcar
 SR-520
 Central Waterfront
 Mercer West Corridor

Seattle Department of Transportation

Director's Office

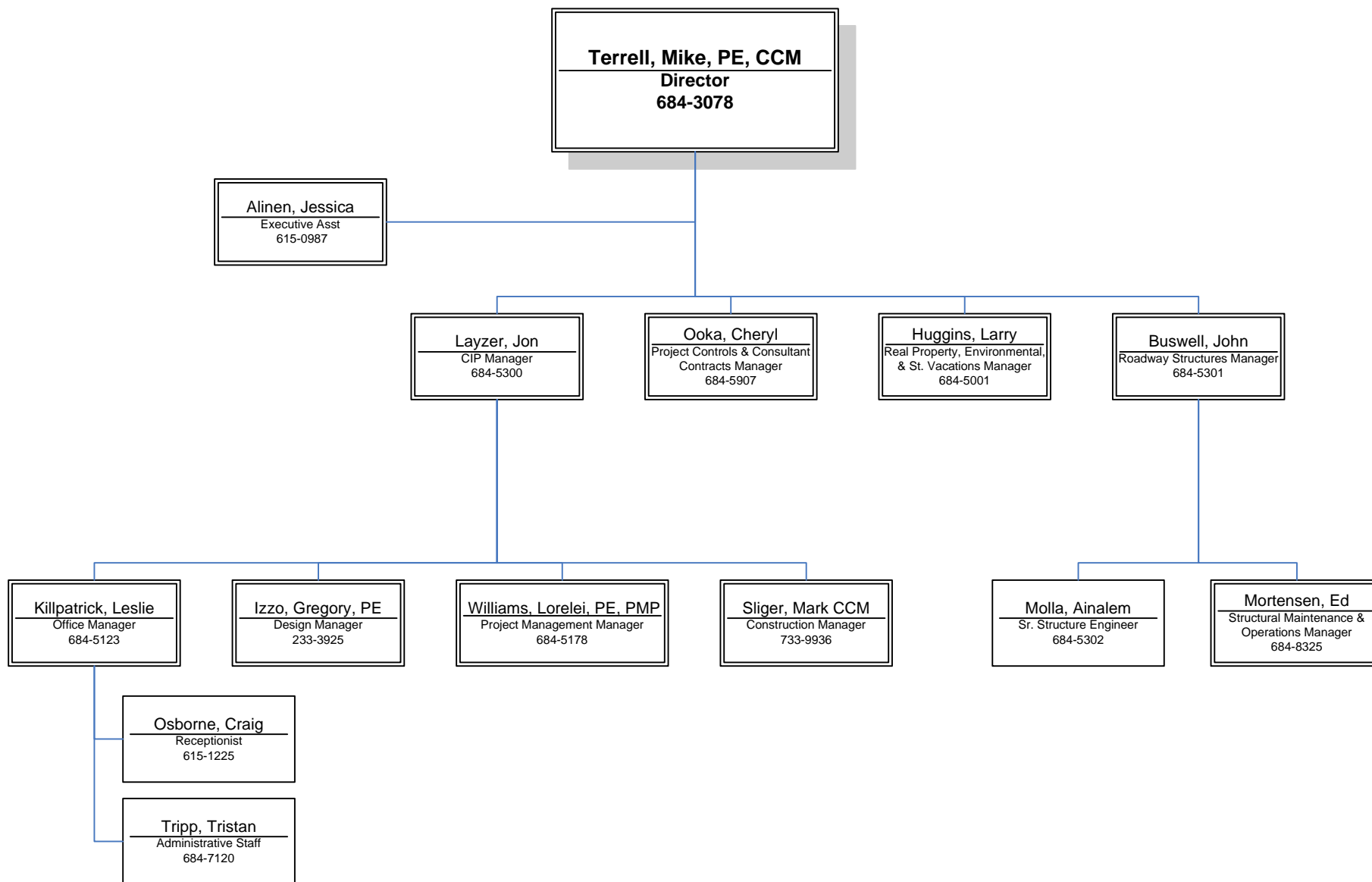
November 2011 – Page 2



Seattle Department of Transportation

Capital Projects & Roadway Structures
Division Director's Office

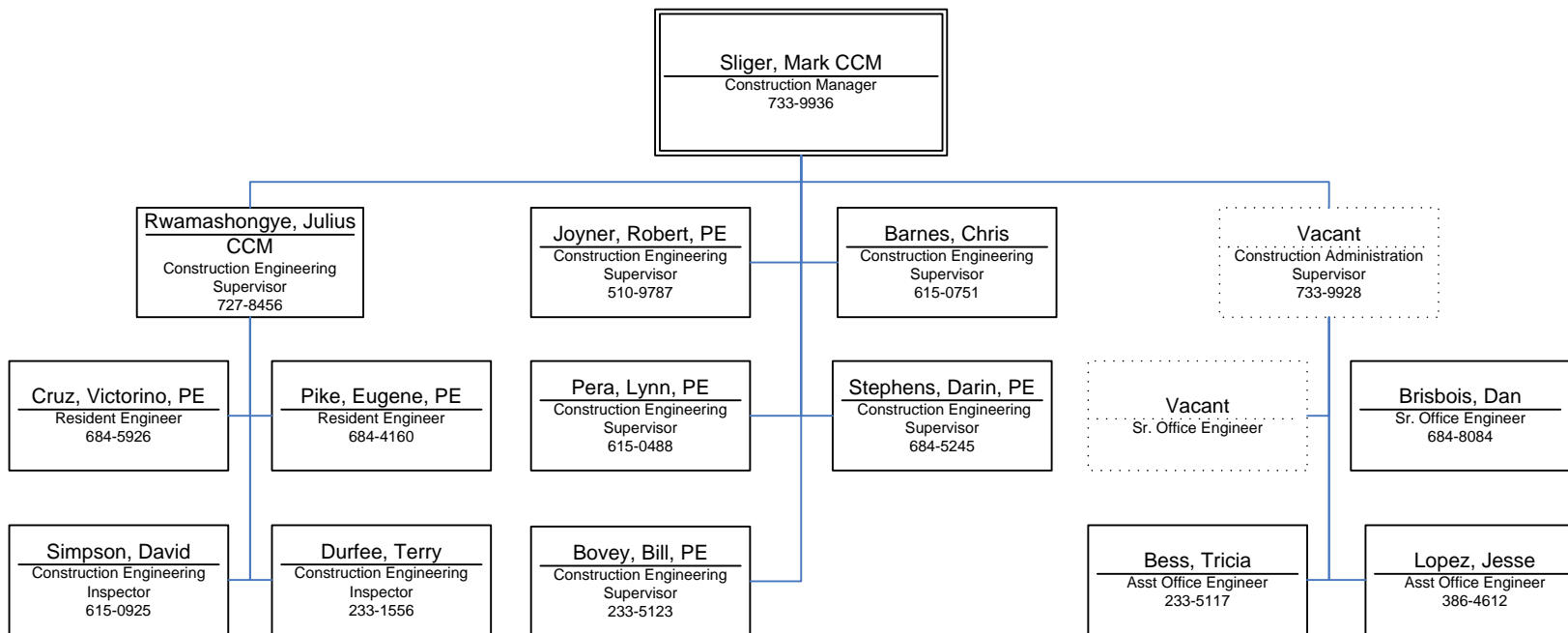
November 2011 – Page 3



Seattle Department of Transportation

Capital Projects & Roadway Structures
Construction Management

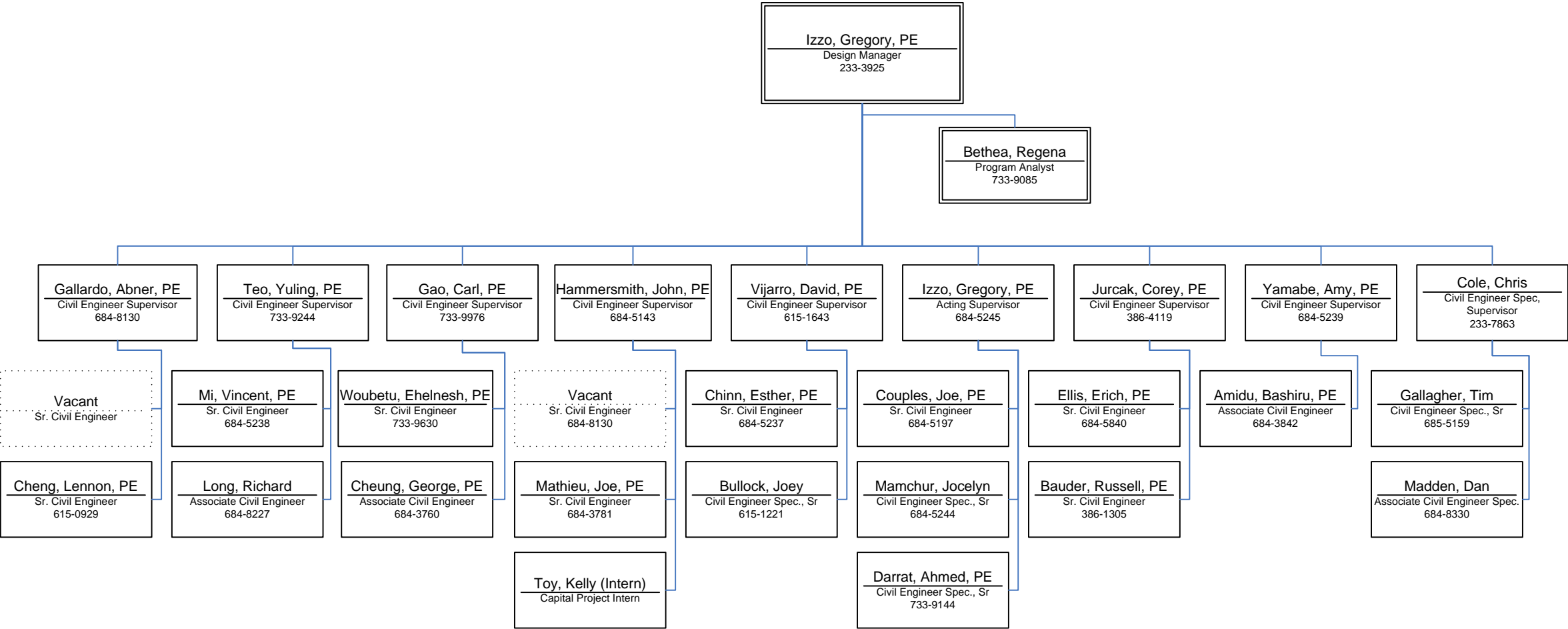
November 2011 – Page 4



Seattle Department of Transportation

Capital Projects & Roadway Structures
Design Group

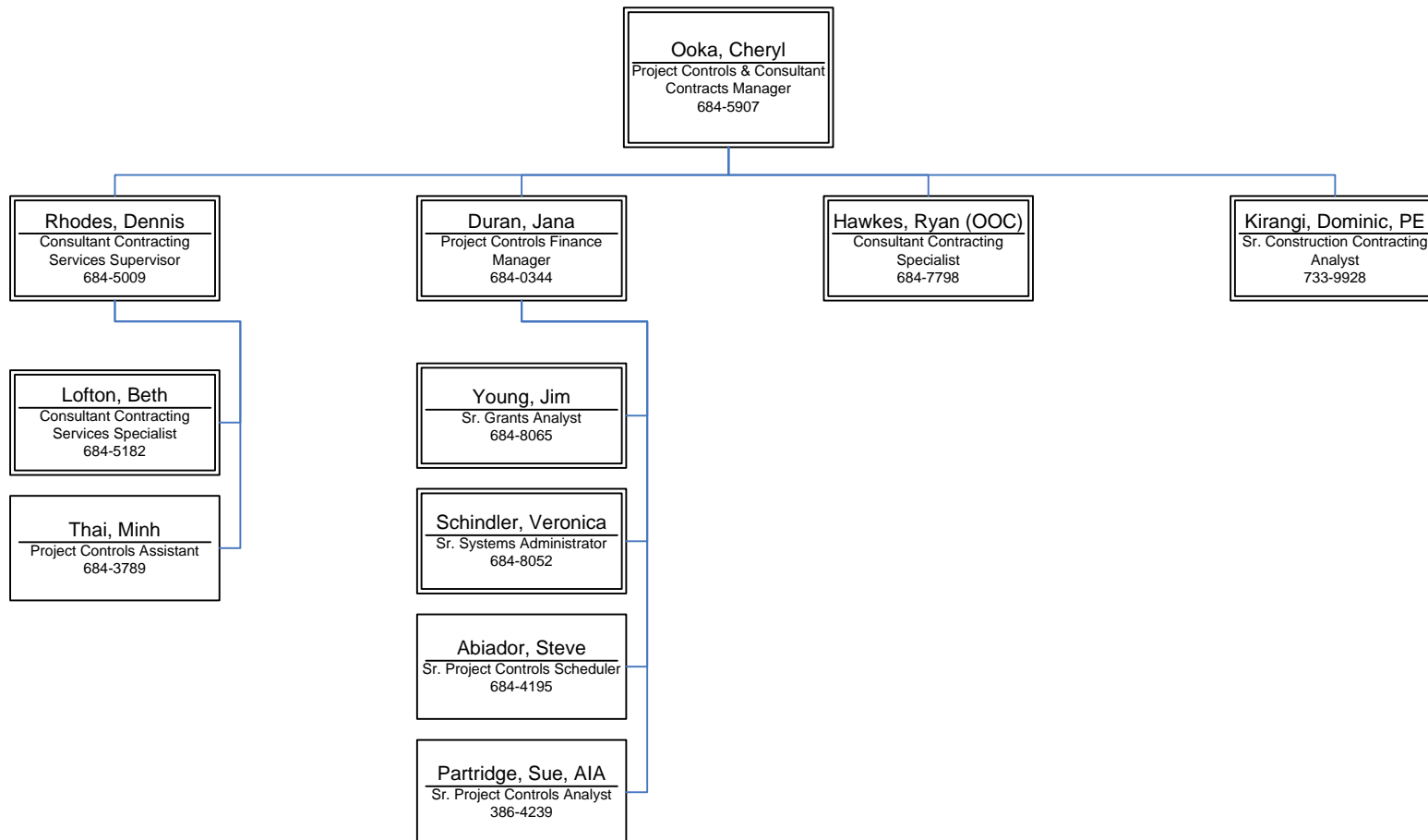
November 2011 – Page 5



Seattle Department of Transportation

Capital Projects & Roadway Structures
Project Controls

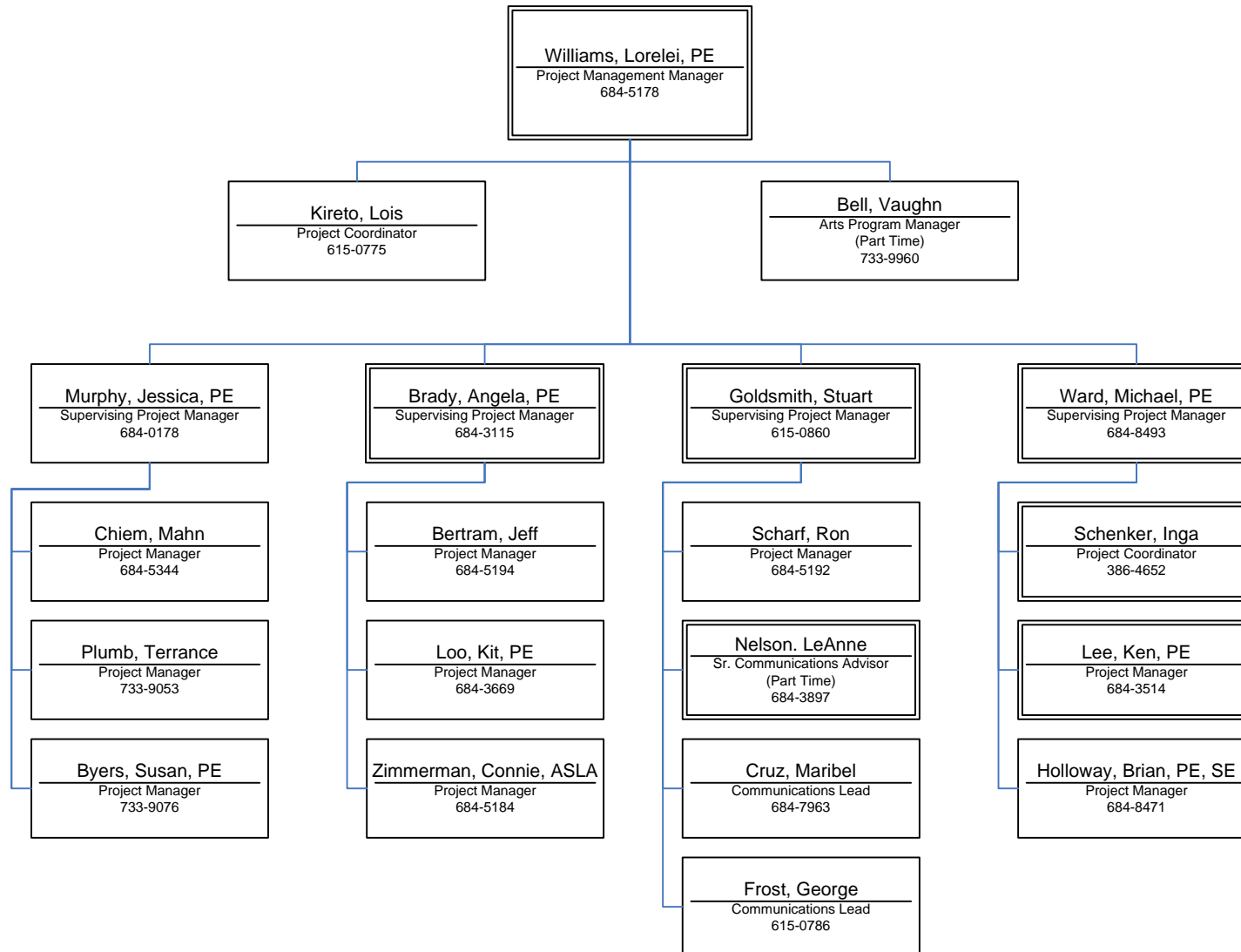
November 2011 – Page 6



Seattle Department of Transportation

Capital Projects & Roadway Structures
Project Management

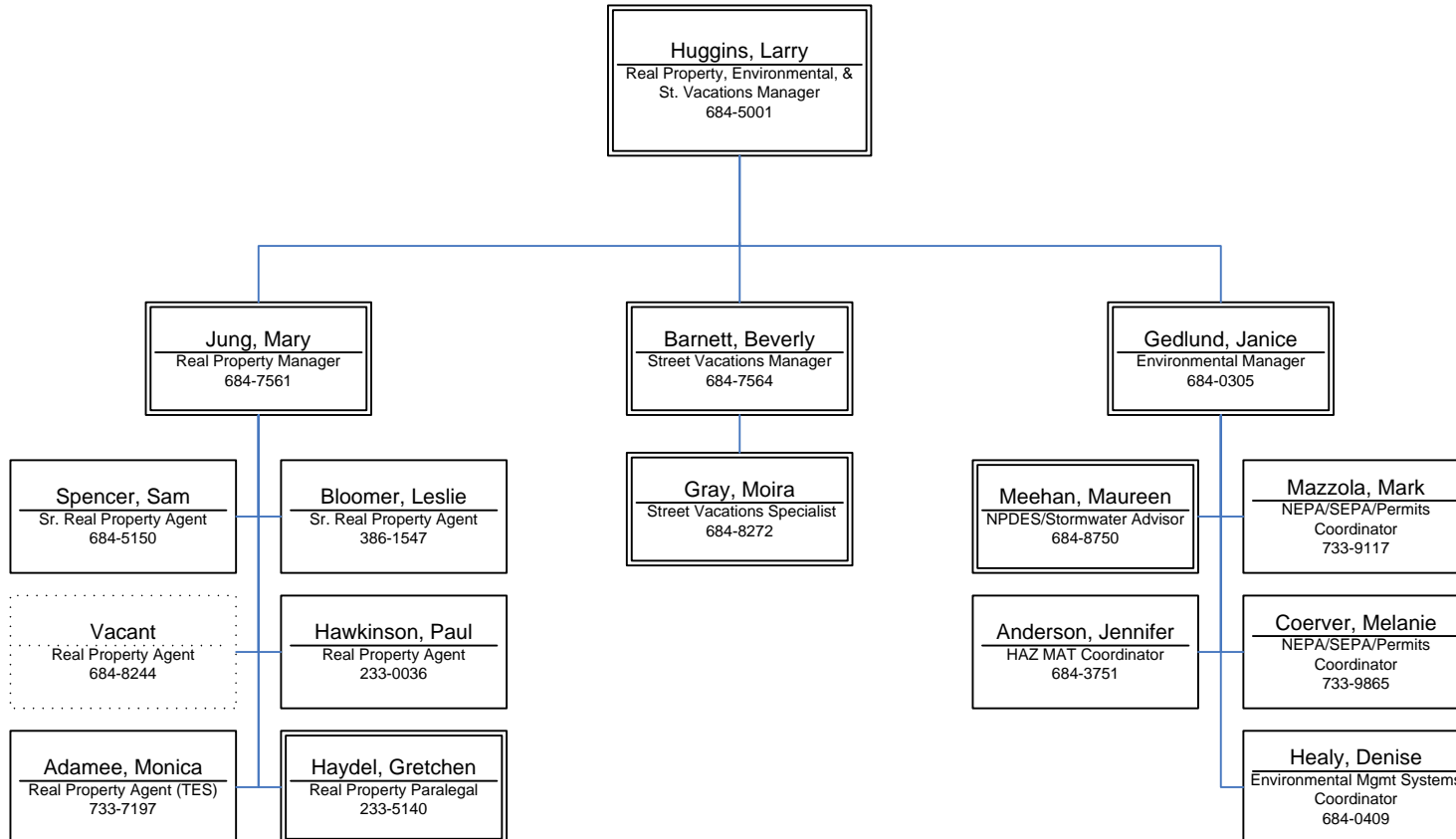
November 2011 – Page 7



Seattle Department of Transportation

Capital Projects & Roadway Structures
Real Property, Environmental & Street Vacations

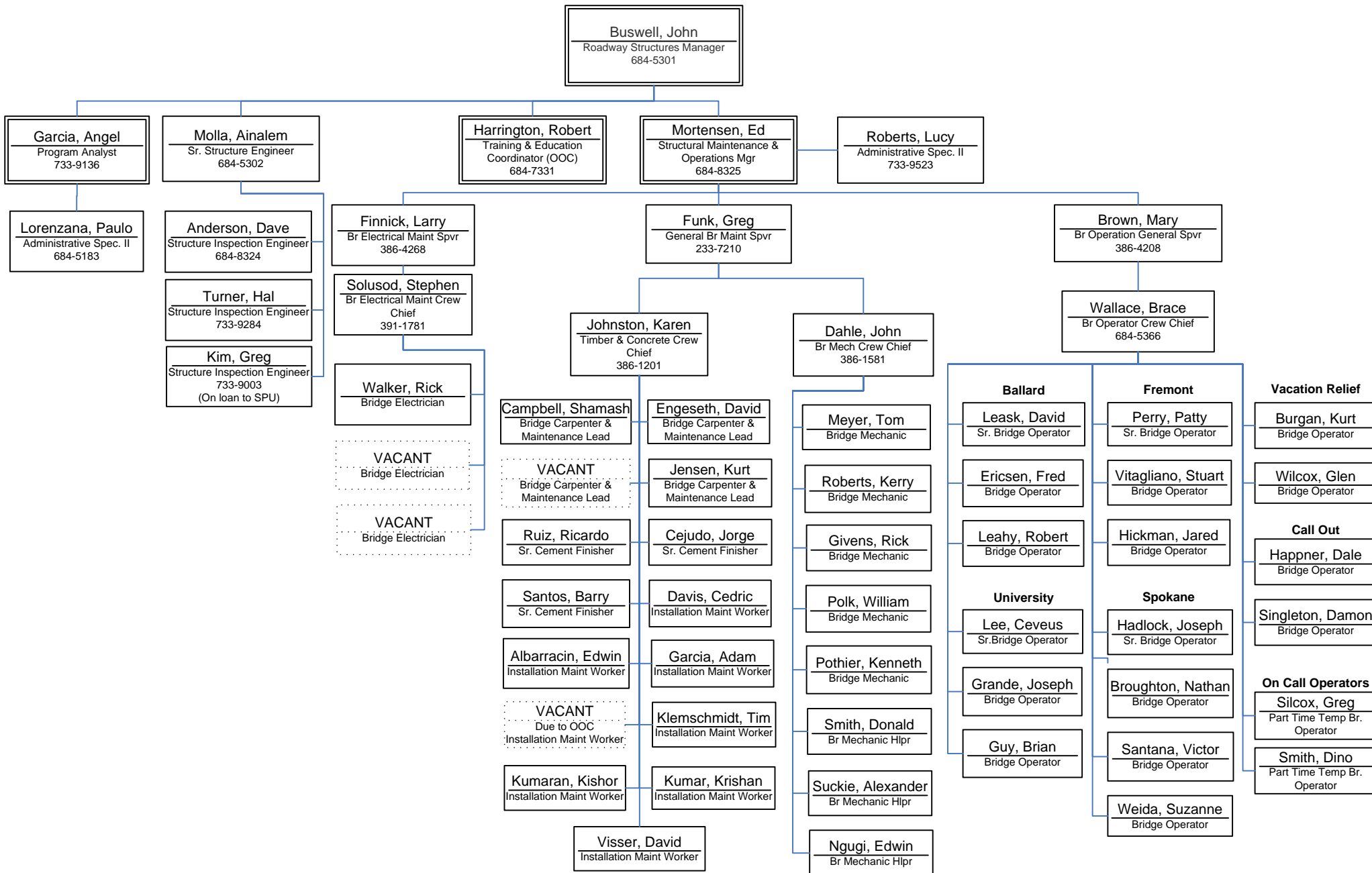
November 2011 – Page 8



Seattle Department of Transportation

Capital Projects & Roadway Structures
Roadway Structures Group

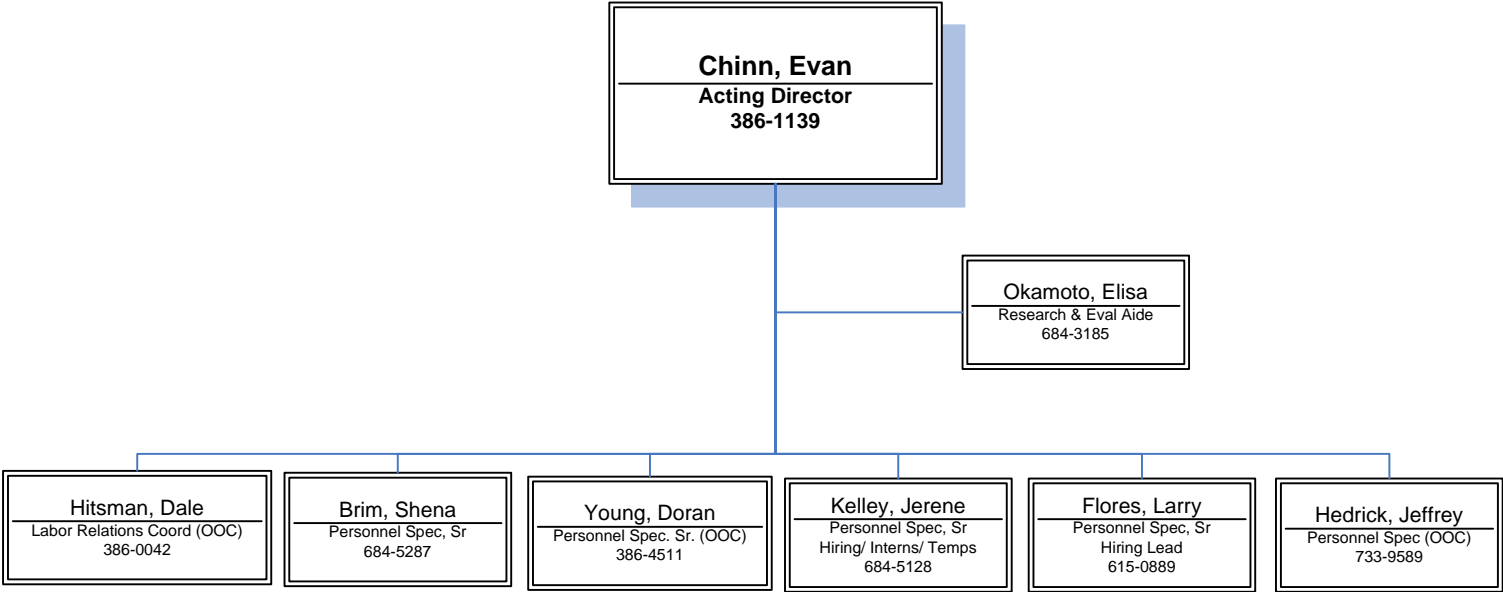
November 2011- Page 9



Seattle Department of Transportation

Human Resources Division

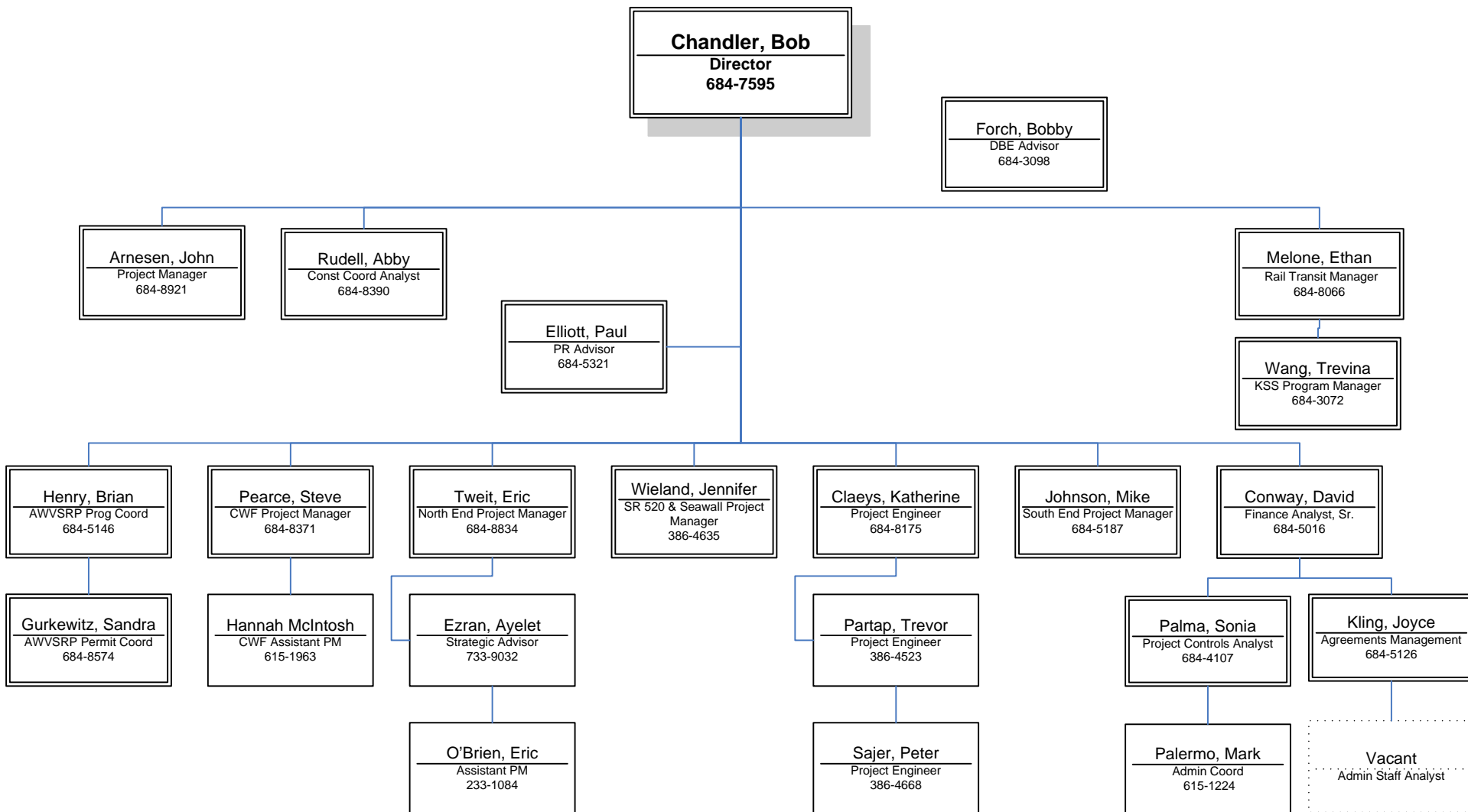
November 2011 – Page 10



Seattle Department of Transportation

Major Projects Division

November 2011 – Page 11

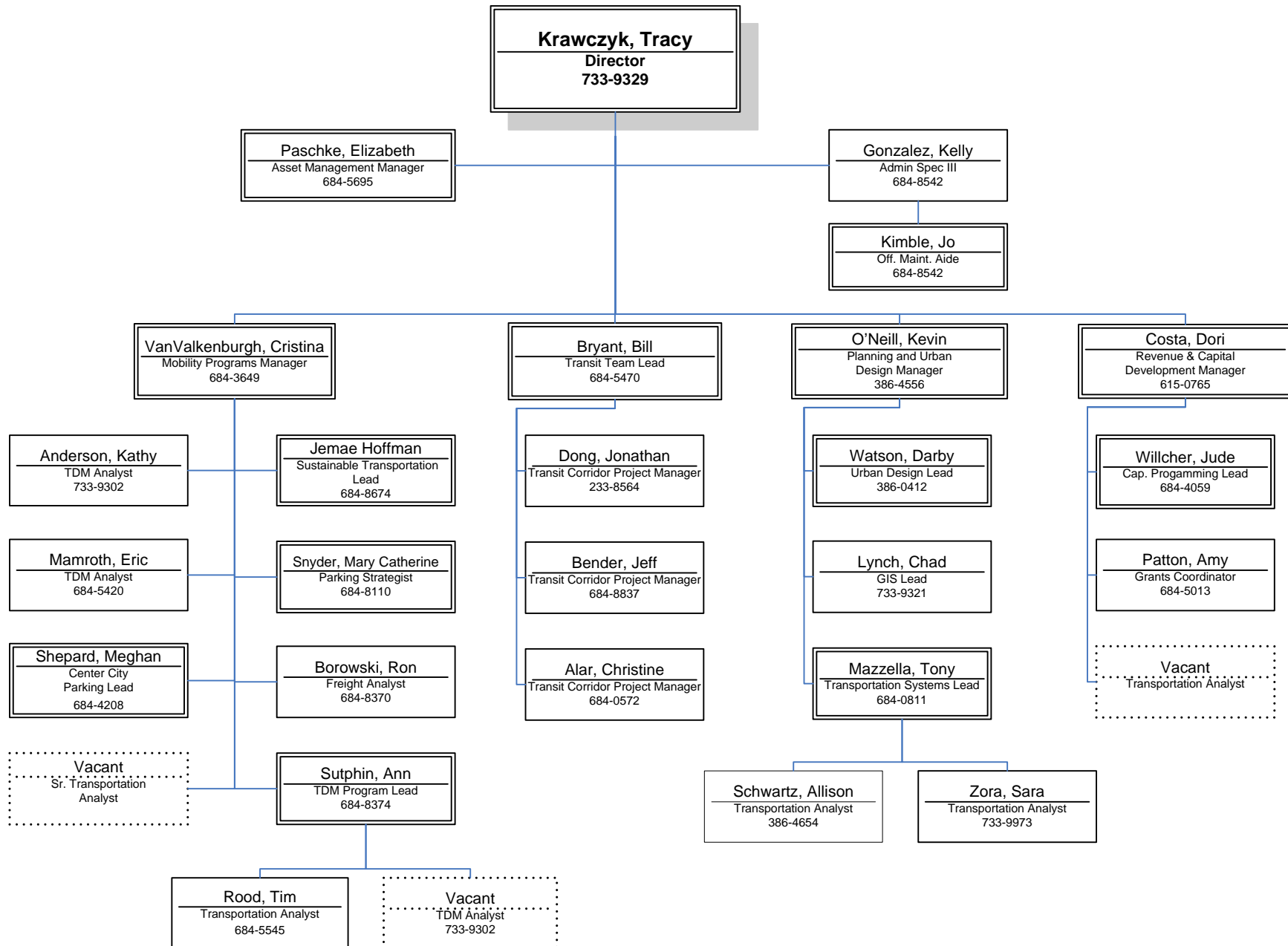


Note: Brian Holloway
Seawall Deputy PM
Shown in CPRS Org Chart

Seattle Department of Transportation

Policy and Planning Division

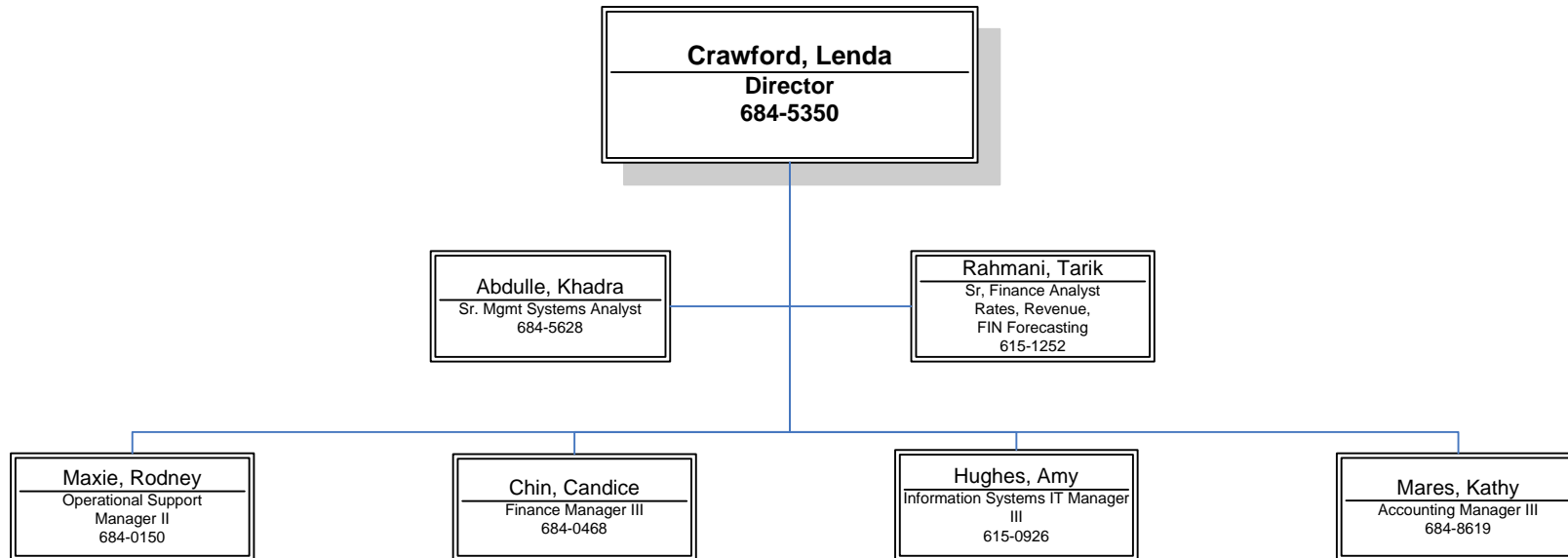
November 2011 – Page 12



Seattle Department of Transportation

Resource Management
Division Director's Office

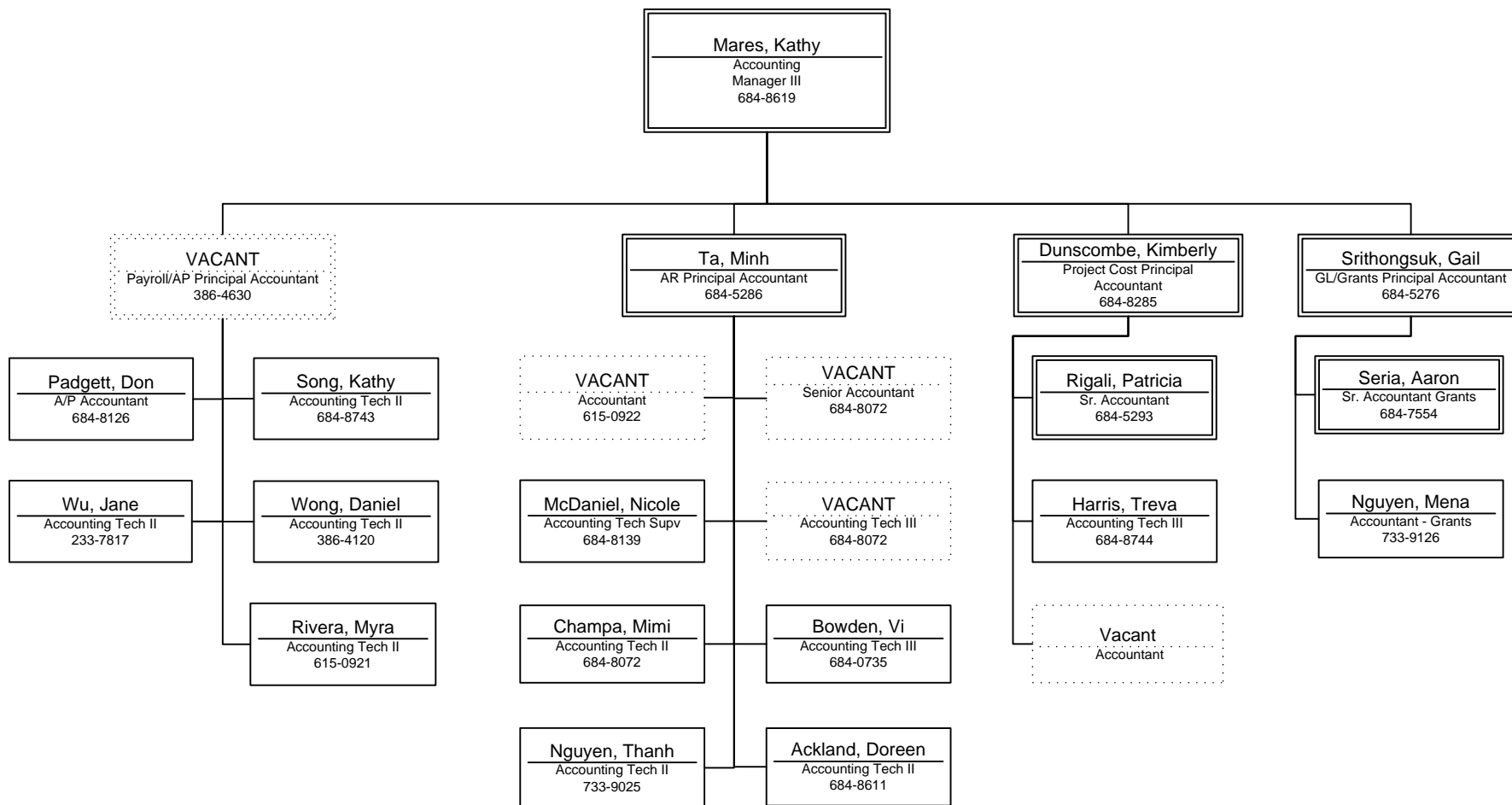
November 2011 – Page 13



Seattle Department of Transportation

Resource Management
Accounting

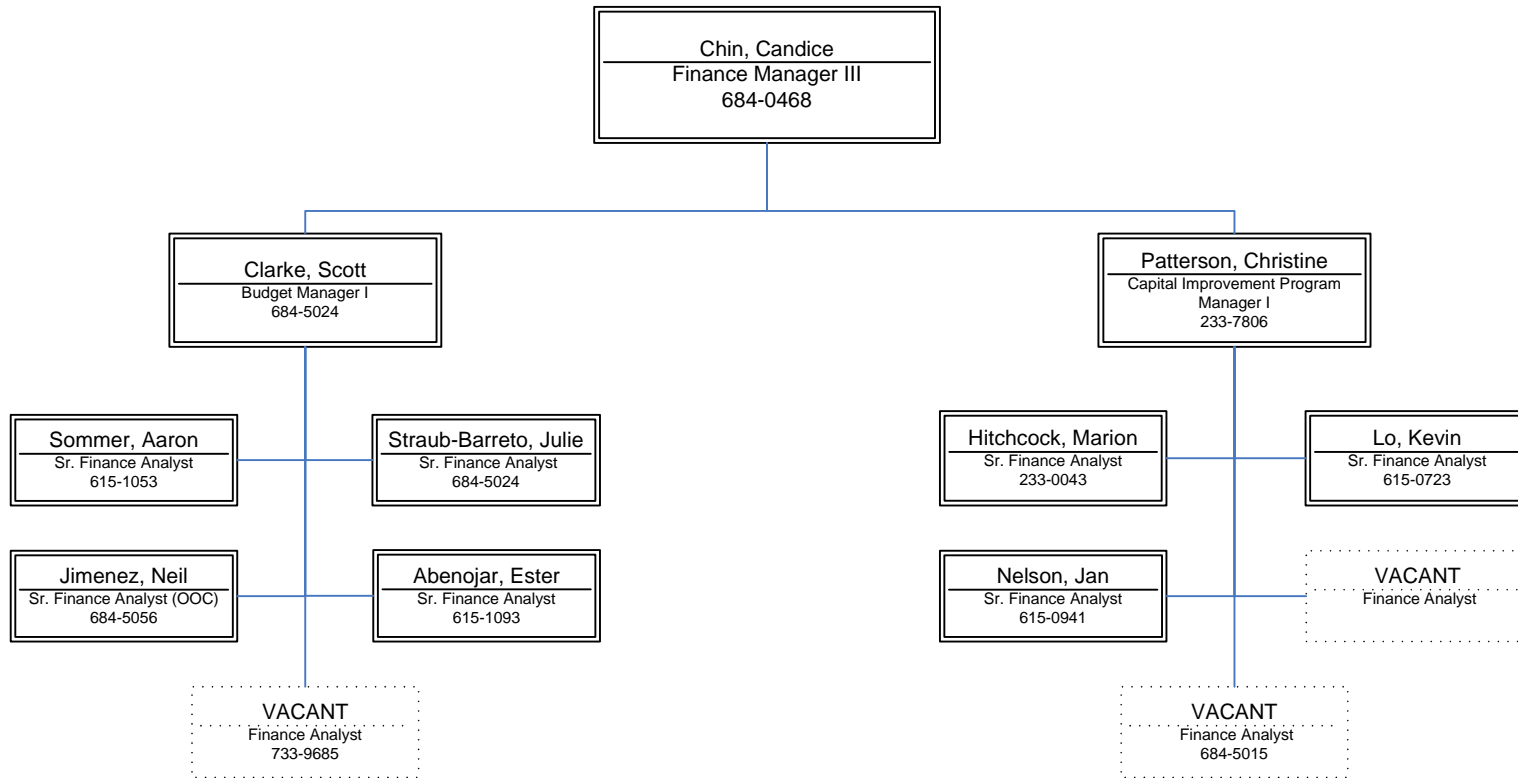
November 2011 – Page 14



Seattle Department of Transportation

Resource Management
Finance

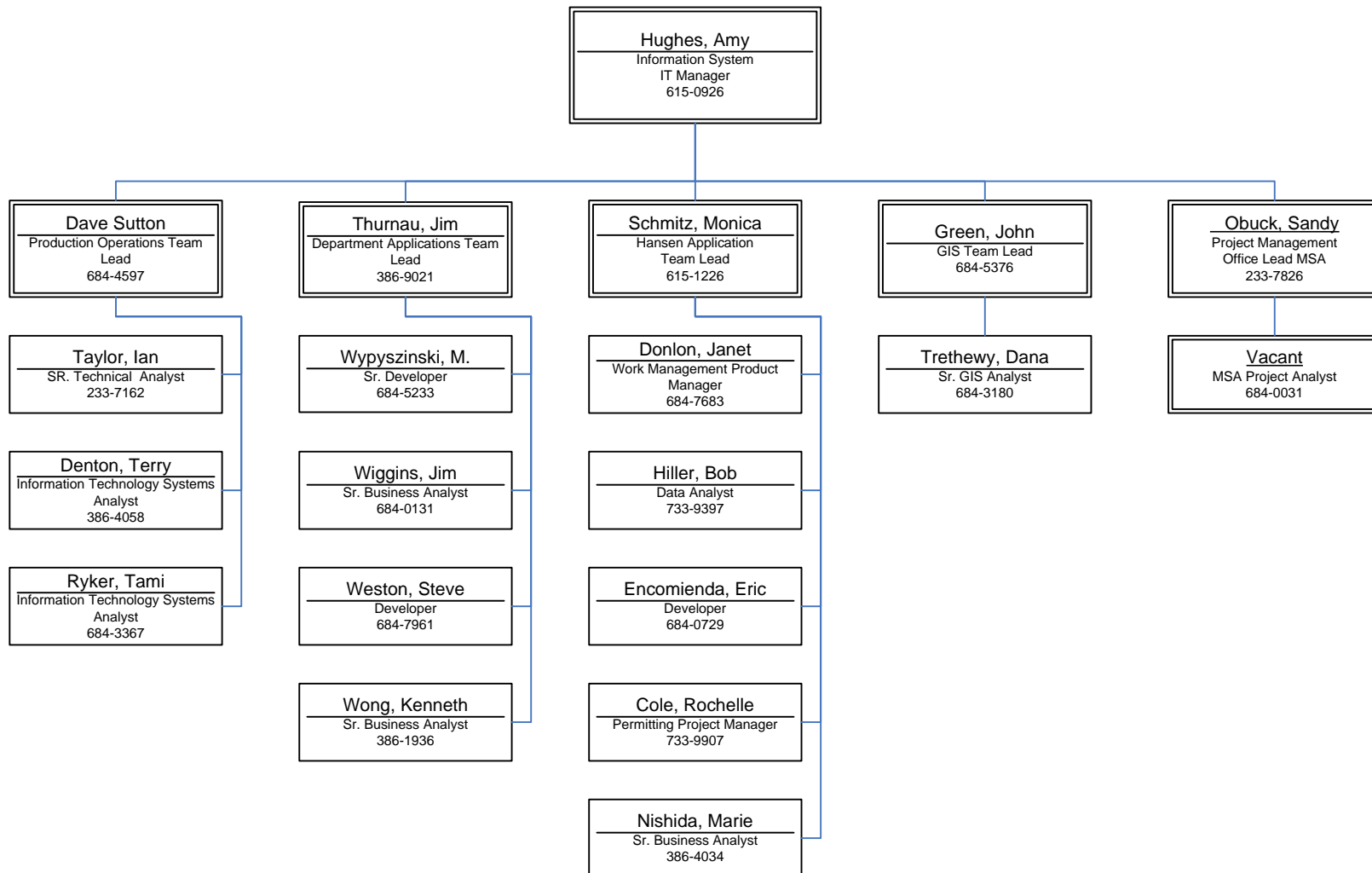
November 2011 – Page 15



Seattle Department of Transportation

Resource Management
Information Technology

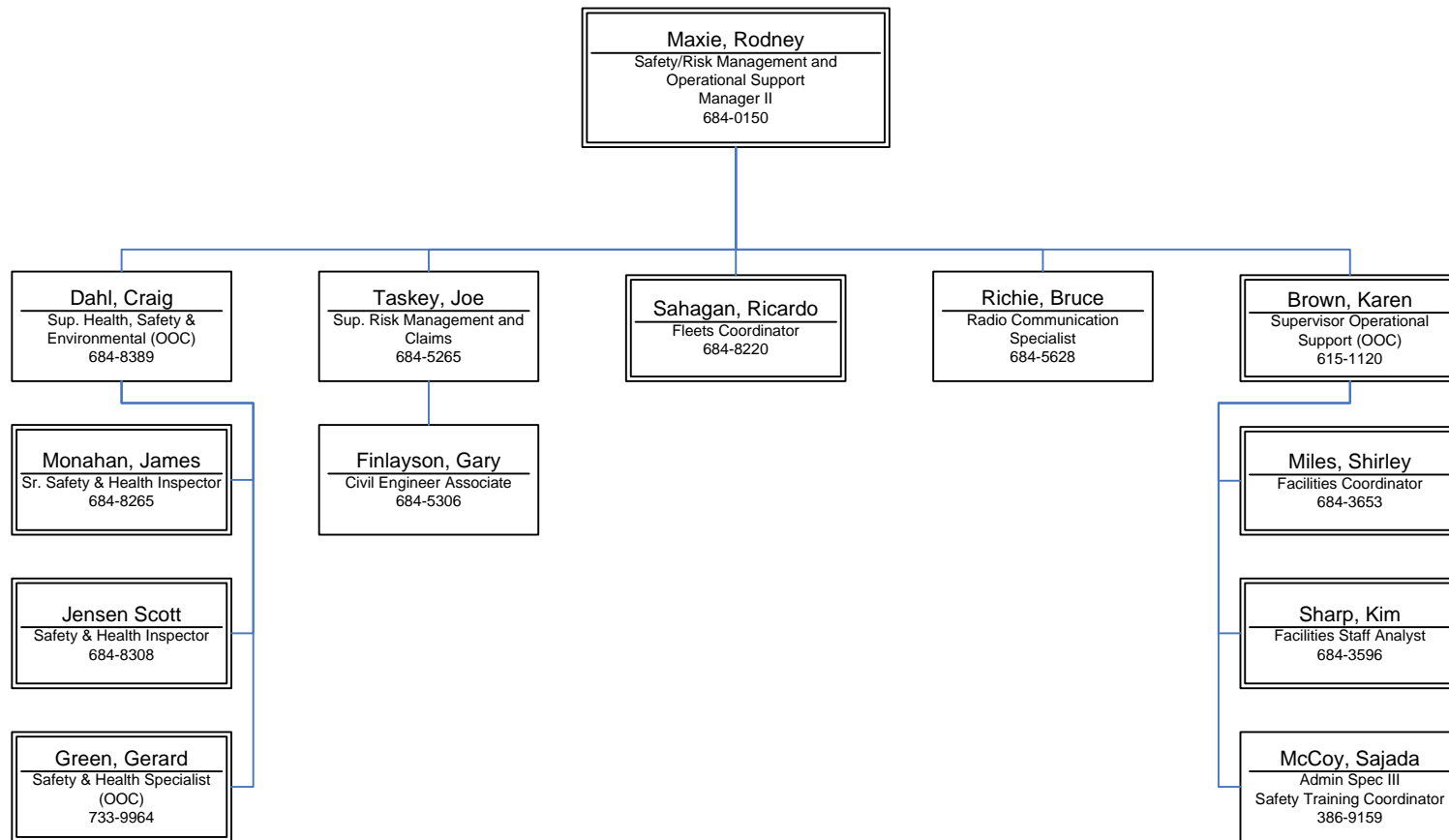
November 2011 – Page 16



Seattle Department of Transportation

Resource Management
Safety/Risk Management and Operational Support

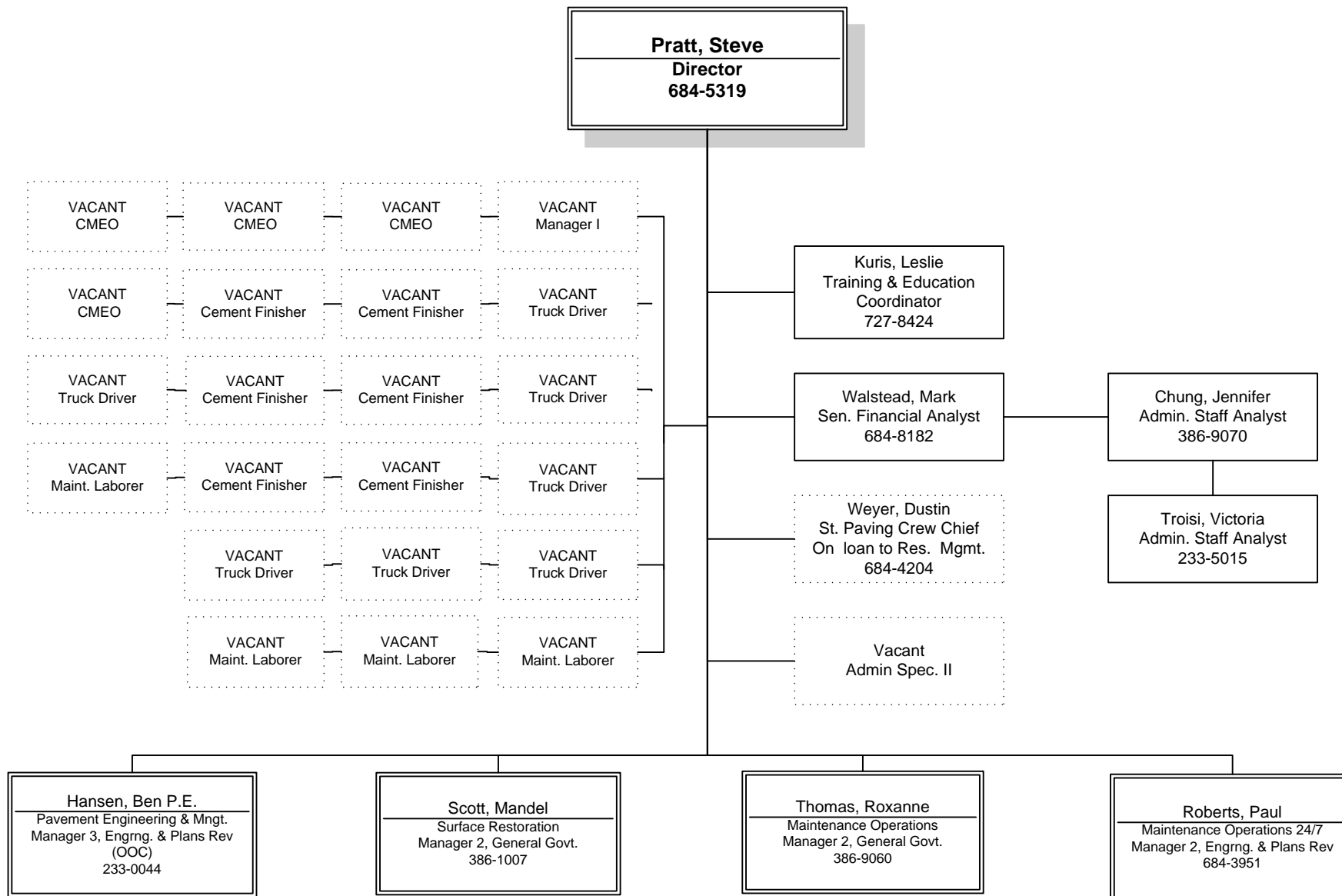
November 2011 – Page 17



Seattle Department of Transportation

Street Maintenance Division
Division Director's Office – TR 340

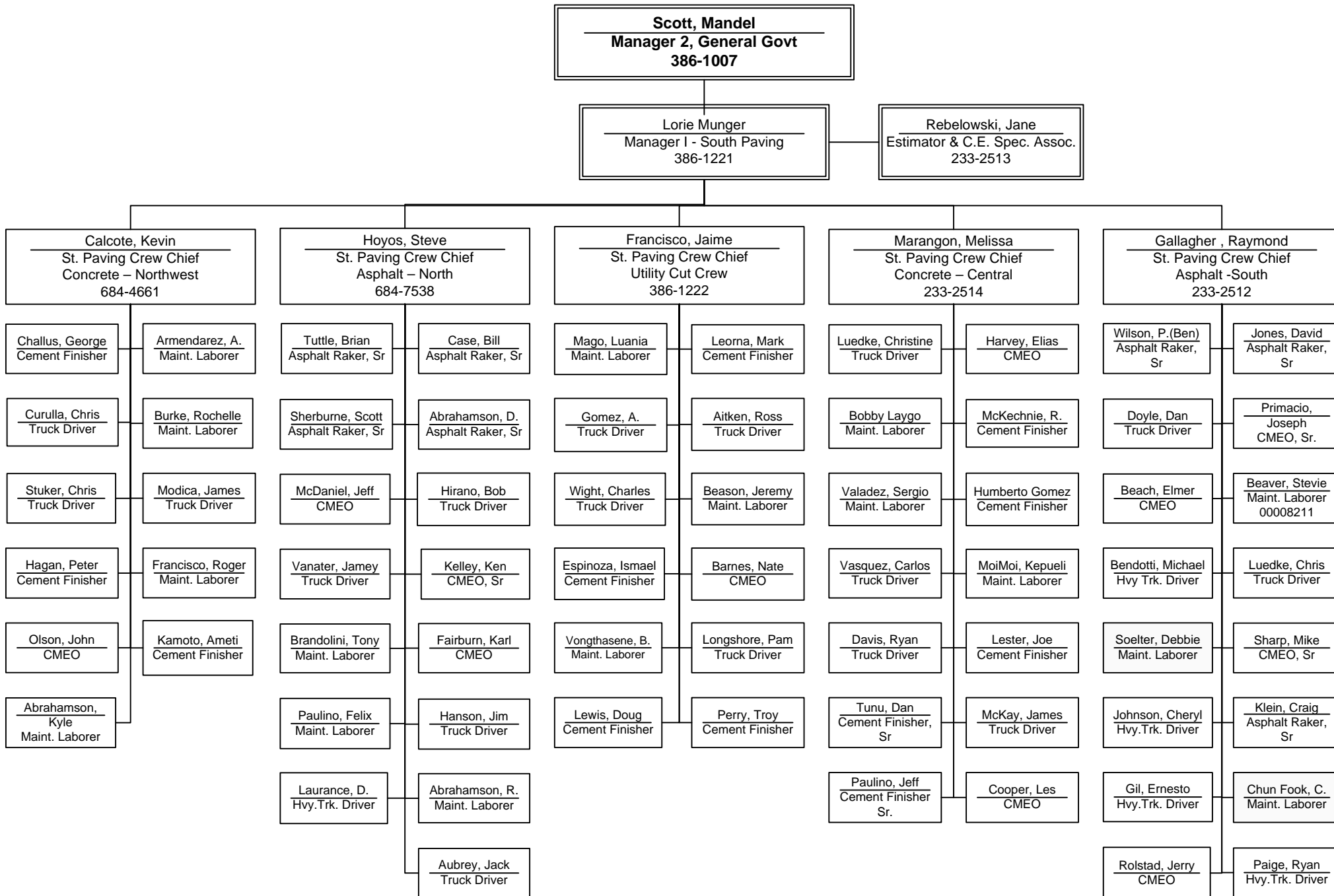
November 2011 – Page 18



Seattle Department of Transportation

Street Maintenance Division
Surface Restoration-TR310 & TR315

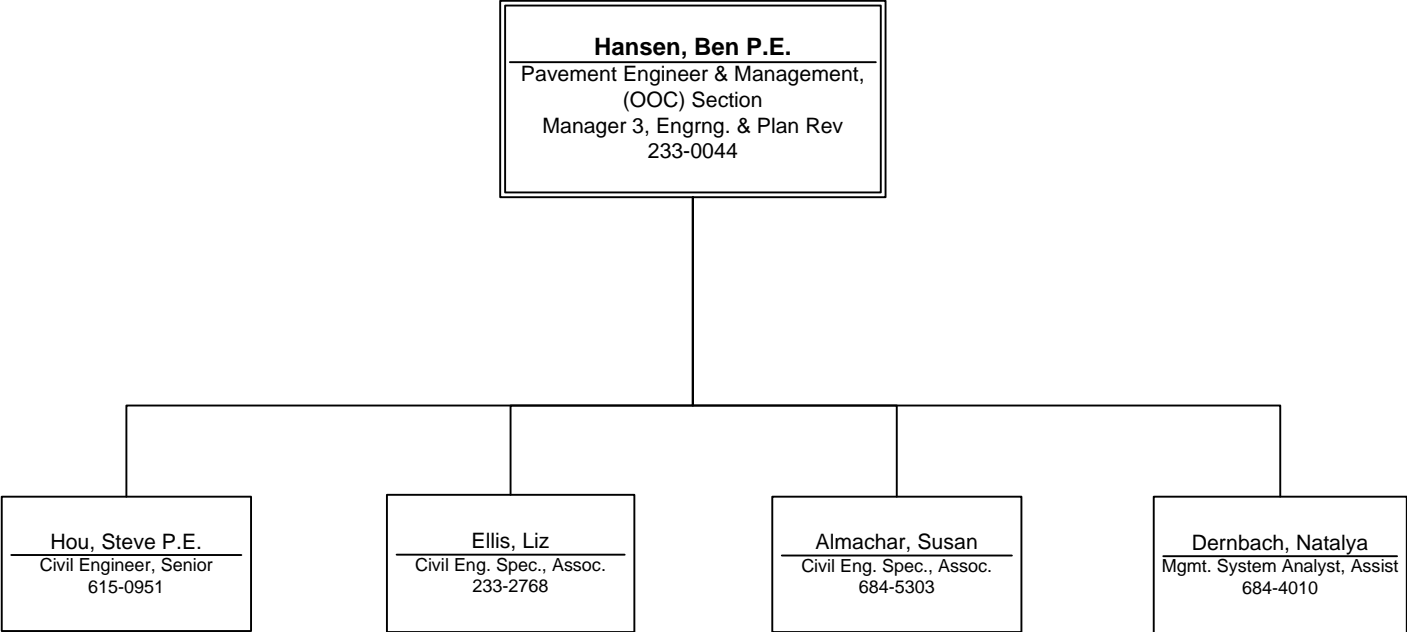
November 2011 – Page 19



Seattle Department of Transportation

Street Maintenance Division
Pavement, Engineering & Management Section – TR 320

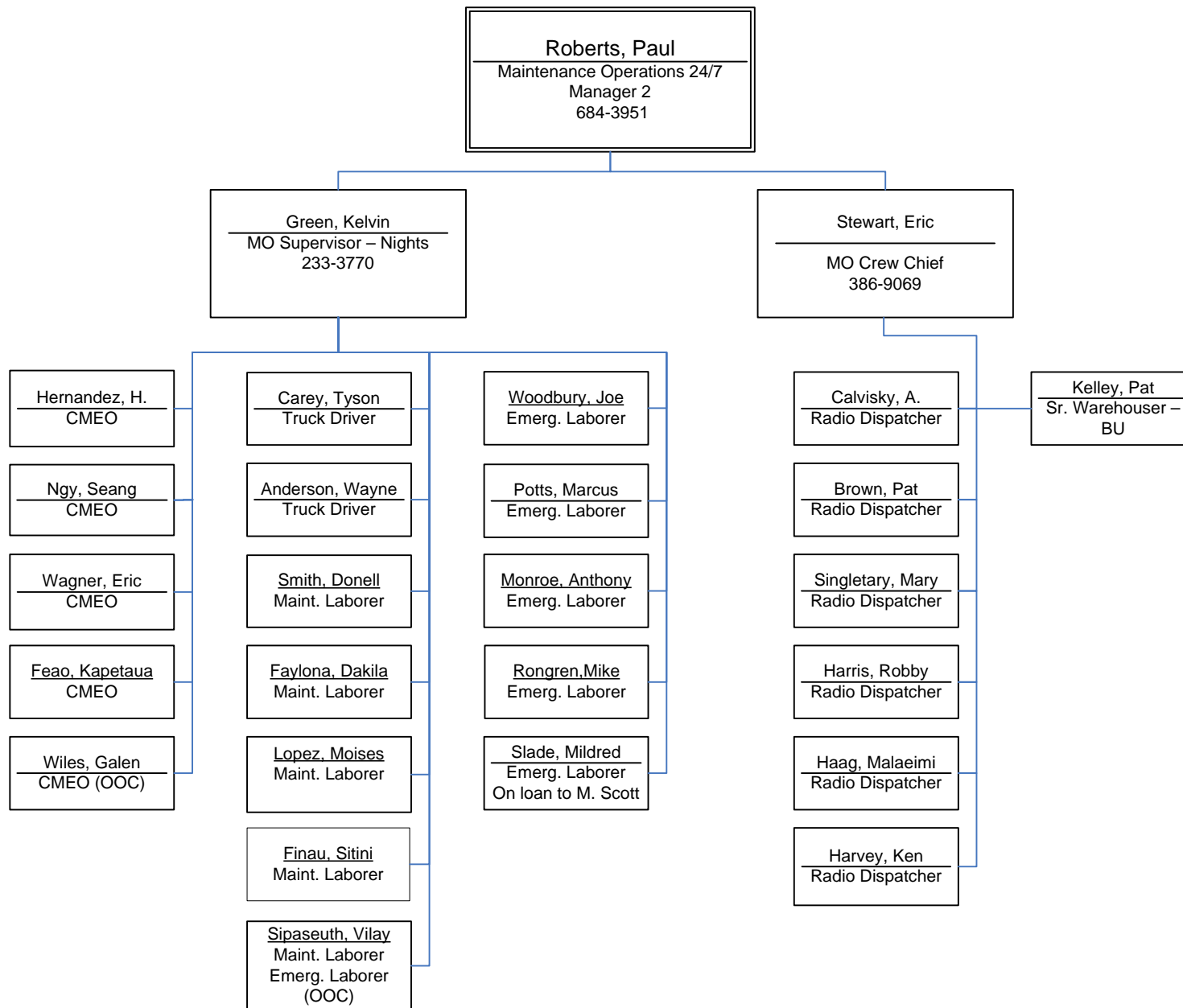
November 2011 – Pge 20



Seattle Department of Transportation

Street Maintenance Division
Maintenance Operations 24/7- TR325

November 2011 – Page 21



Seattle Department of Transportation

Street Maintenance Division
Maintenance Operations-TR330 & TR335

November 2011 – Page 22

Thomas, Roxanne
Maintenance Operations Manager 2
386-9060

Scott, Marilyn
MO Supervisor North
684-0788

Sweeney, Karen
MO Supervisor
Central & South
386-9074

Lightfoot, Kevin
MO Crew Chief,
Northeast
233-3942

Vacant
MO Crew Chief,
Northwest

Laue, Steve
MO Crew Chief Central &
South
233-3772

McMurtry, William
MO Crew Chief,
Southwest

Daniel, Tyreel
Truck Driver

Stevenson, Joe
Truck Driver

Johnston, Justin
Maint. Laborer

Trias, Jeff
Asphalt Raker

Lutovsky, Darrel
Truck Driver

Davis, Bobby
Asphalt Raker

Bjorkman, Hal
CMEO

Dumas, Reuben
Truck Driver

Ringnada, Ron
CMEO

Namsa, Jerry
Maint. Laborer

Dawson, M.
Maint. Laborer

Houston, Michael
Truck Driver

Carter, Patrick
Maint. Laborer

Ekman, Gary
Truck Driver

Davison, E.
Asphalt Raker

Pablo, Paul
Maint. Laborer

Duncan, Jarode
Maint. Laborer

Harmani, Takai
Maint. Laborer

Ing, Brian
Truck Driver

Gomez, Hector
Maint. Laborer

Naiuli, Sofai
Maint. Laborer

Ladan, John
Maint. Laborer

Matautia, Renee
Maint. Laborer

Beaver, James
Maint. Laborer

Eaton, Leon
Maint. Laborer

Kongaika, Alisi
CMEO

Sal Souryadeth
Maint. Laborer

Buell, Zachery
Maint. Laborer
Truck Driver
(OOC)

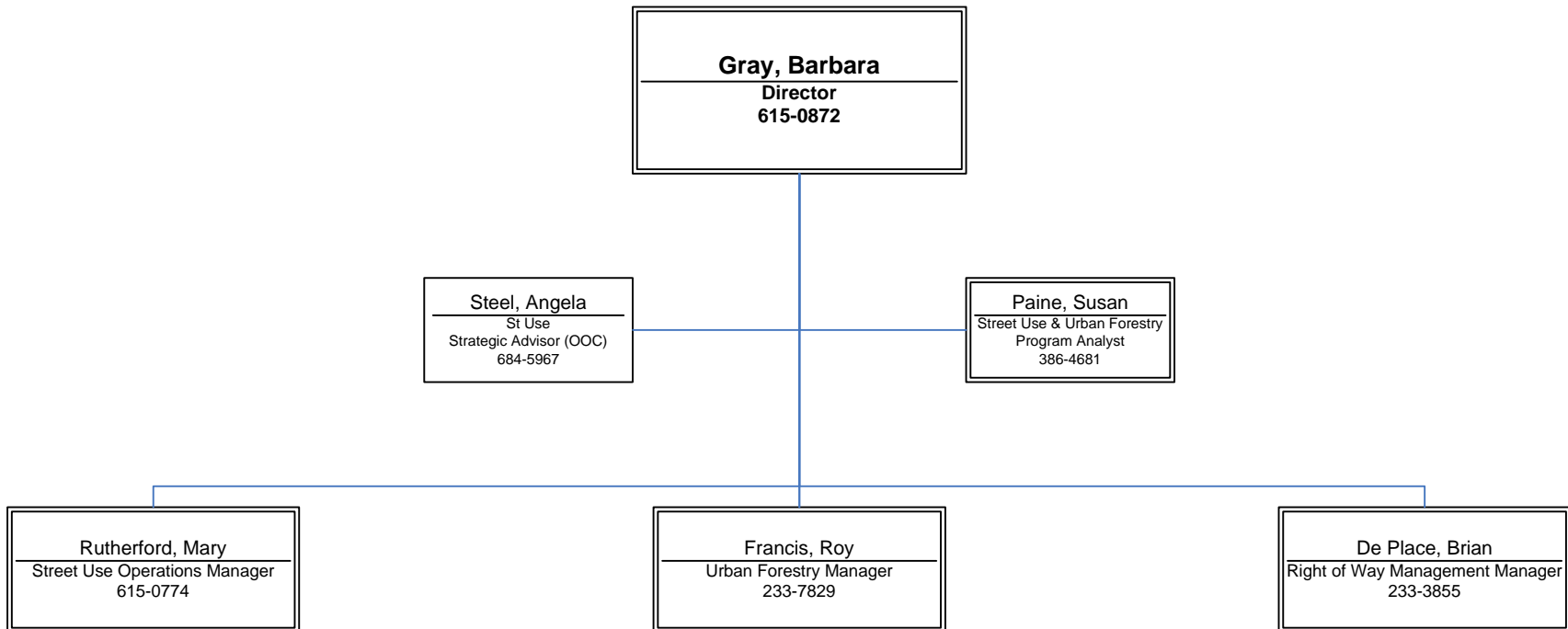
Phonbandit, N.
Maint. Laborer

Roman Mulipola
Maint. Laborer

Seattle Department of Transportation

Street Use & Urban Forestry Division
Division Director's Office

November 2011 – Page 23



Seattle Department of Transportation

Street Use Division

November 2011 – Page24

Gray, Barbara
Division Director
615-0872

Operations Section

Right Of Way Management Section

Rutherford, Mary PE
Operations Manager
615-0774

dePlace, Brian
ROW Manager
233-3855

Data/Financial/Reporting

Eugene, MaryAlyce
MSA
Data Analyst
386-0021

VACANT
MSA
Data Analyst

Chin, William
Inspection Group Supv
386-1009

Sheldon, Elizabeth PE
SI Plan Review Supervisor
684-7945

Bou, William PE
Shoring & SI Inspection
Supervisor
684-9250

Saiyadeth, Lynn
Admin. Support Supv.
233-3844

Smith, Theresa PE
CE Supervisor
684-5879

Leitch, Kate
Team Lead
684-7995

Inspection

Street Improvements

Shoring

SIP Inspection

Insp/Review Data Management

Burroughs, Diana
Permit Support
615-1623

VACANT
Complaint Investigator
615-0877

Utilities

Annual Permits

Customer Support Services

Trokey, Jenelle
Team Lead
(North District)
684-0989

Ewalt, Ken
Team Lead
(Center City)
684-4995

Stewart, Dennis
Team Lead
(South District)
386-9881

Frederick, Tammy PE
Project Manager
615-0927

Gu, Ray PE
Shoring Reviewer
684-5281

Williams, Pamela
SI Inspector
386-9141

Acoba, Nina
Admin Spec II
684-8184

Green, Jinny
Team Lead
684-5280

Berry, Melody
Team Lead
733-9052

Quirk, Patti
Permit Issuer/Inspector
684-8501

Lambert, Jo
Customer Support
684-5442

Petersen, Sandra
Inspector
615-0897

Miller, Kevin
Inspector
684-8845

Ryles, David
Inspector
684-8565

Kaarrekoski, Leo
Project Manager
684-5234

Marsten, Curtis
Shoring Eng. Spec.
233-0017

McCandlish, Mike
SI Inspector
233-3847

Triplett, Tammy
Admin Spec II (OOC)
684-5253

Canda, Steven
Permit Issuer
684-5283

VACANT
Util Coordinator

Young, Danny
Permit Issuer/Inspector
233-3849

VACANT
Customer Support
684-5253

Skinner, Jon
Inspector
684-5277

Calkins, Kirk
CES, Assoc
Inspector
684-5272

Soule, David
Inspector
684-8253

Minas, Yohannes
Project Manager
733-9044

Houlihan, Mike
Inspector
684-5278

Caasi, Joe
Permit Support
233-7803

Bell, George
Permit Issuer
233-3848

Doll, David
Permit Issuer/Inspector
233-7831

Cloud, Carl
Office Aide
684-0884

VACANT
Inspector

Ho, Stanley
CES, Assoc Inspector
(OOC)
615-0877

Tramble, Titus
Inspector
233-7260

Prather, Joel
Project Manager
615-0772

Kinney, Dinah
Permit Issuer
615-0928

Sarsfield, Craig
Permit Issuer
233-7831

Garske, Toni
Permit Issuer/Inspector
684-5268

VACANT
Inspector

VACANT
Inspector

VACANT
Inspector

Tabalno, Matt
Project Manager
684-3164

Guyot, Ann-Marie
Permitting Support
233-2644

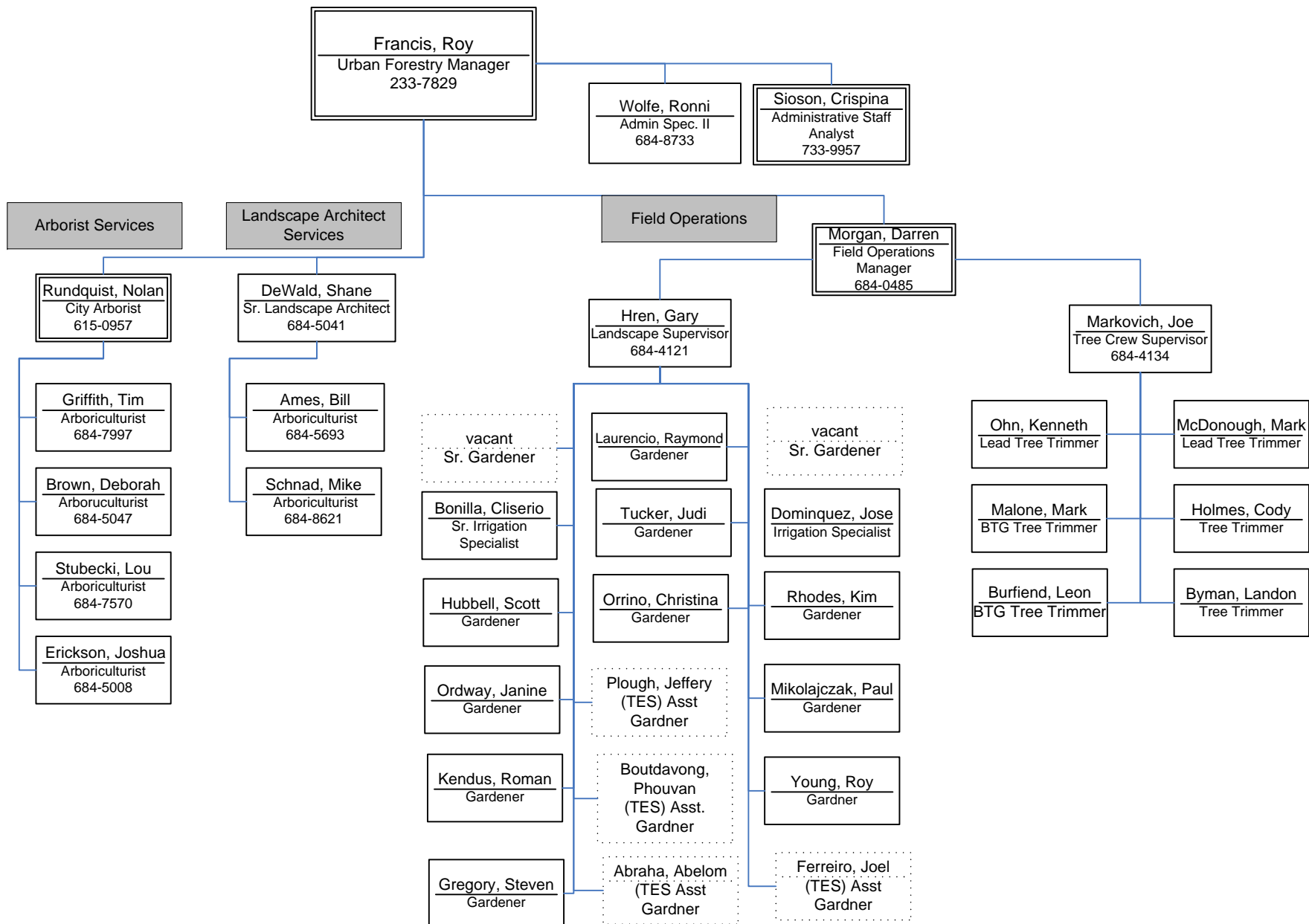
VACANT
Permit Issuer

VACANT
Permit Issuer/Inspector

Seattle Department of Transportation

Street Use
Urban Forestry

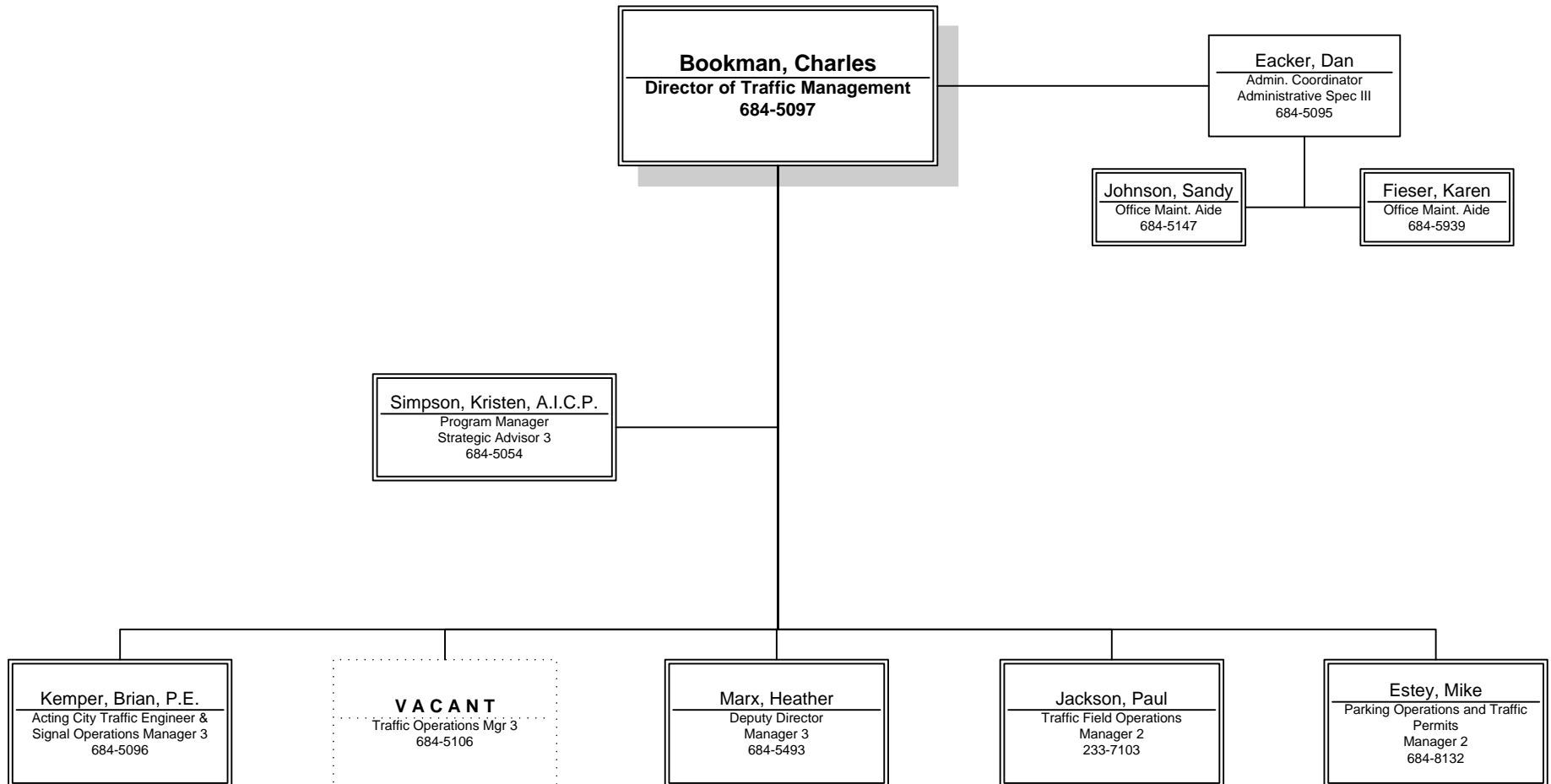
November 2011 – Page 25



Seattle Department of Transportation

Traffic Management Division

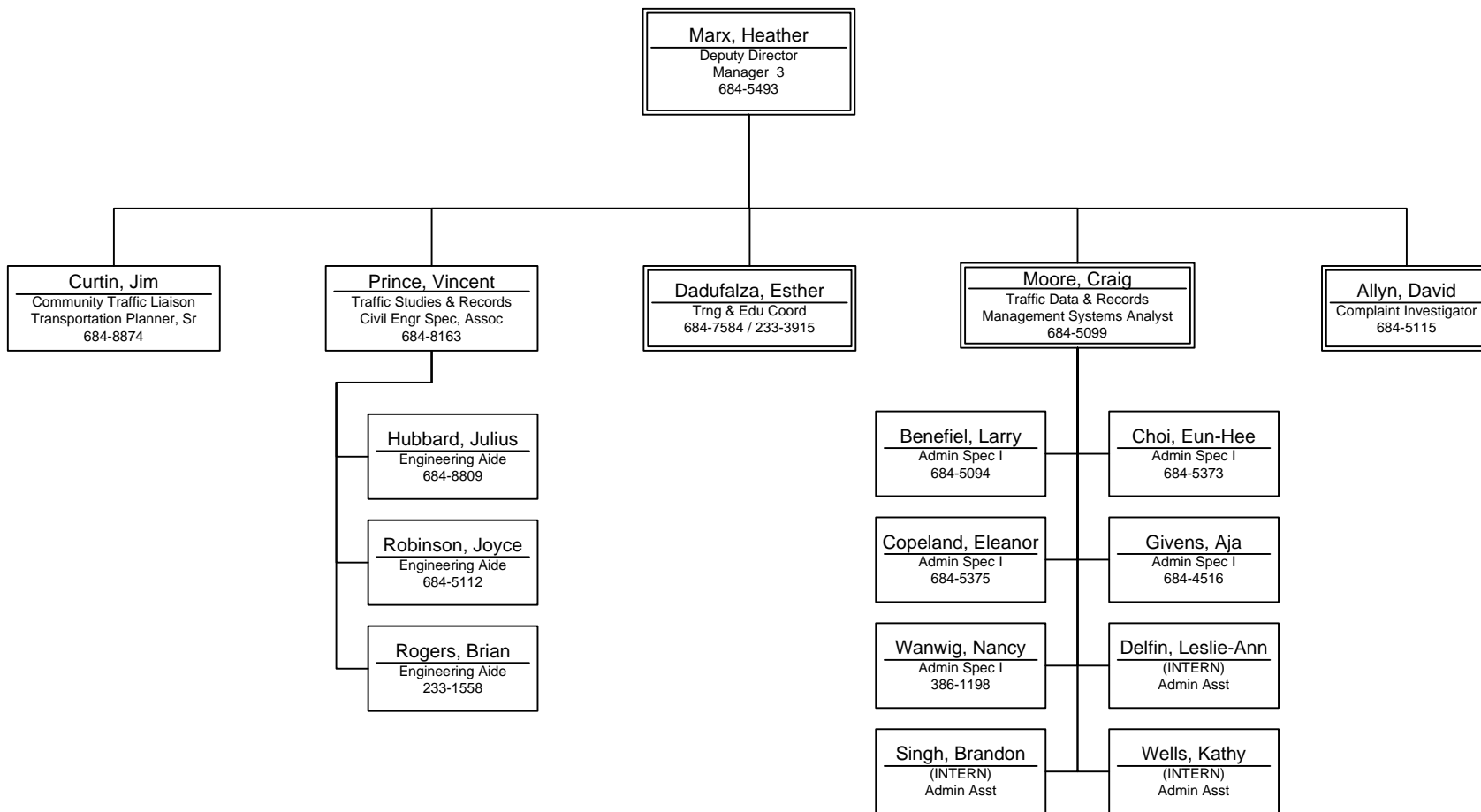
November 2011 – Page 26



Seattle Department of Transportation

Traffic Management Division
Division Deputy Director

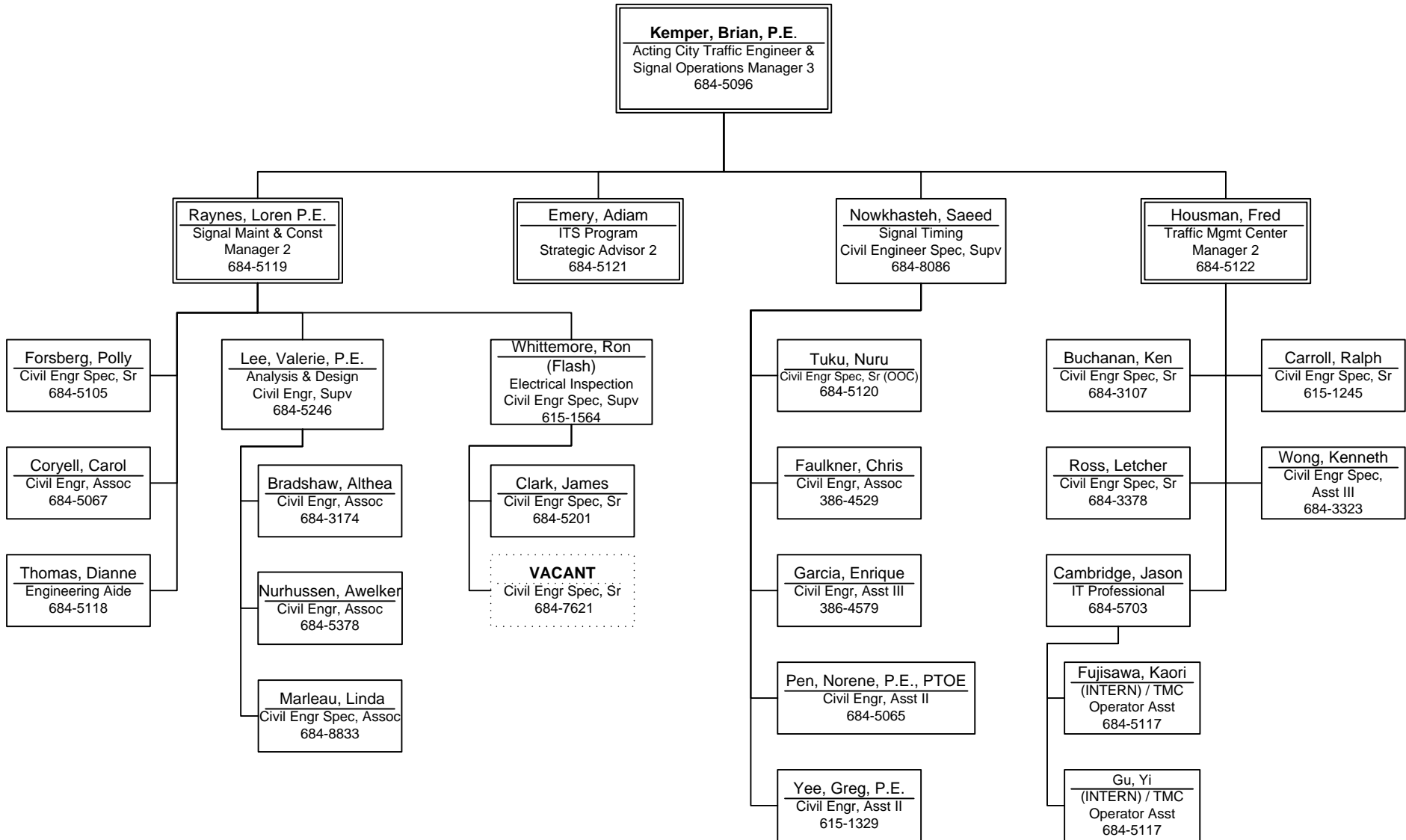
November 2011 – Page 27



Seattle Department of Transportation

Traffic Management Division
Signal Operations & ITS

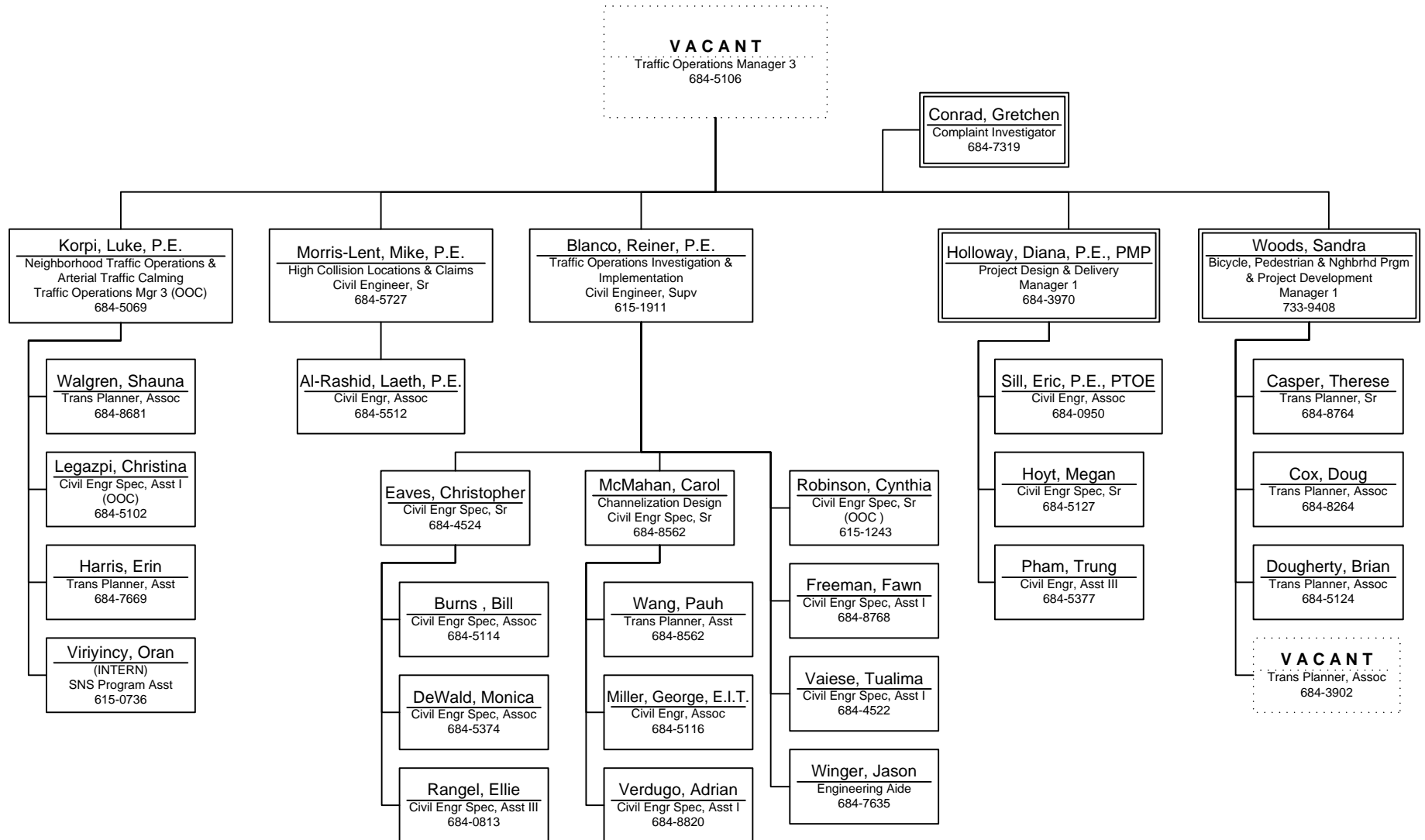
November 2011 – Page 28



Seattle Department of Transportation

Traffic Management Division
Traffic Operations

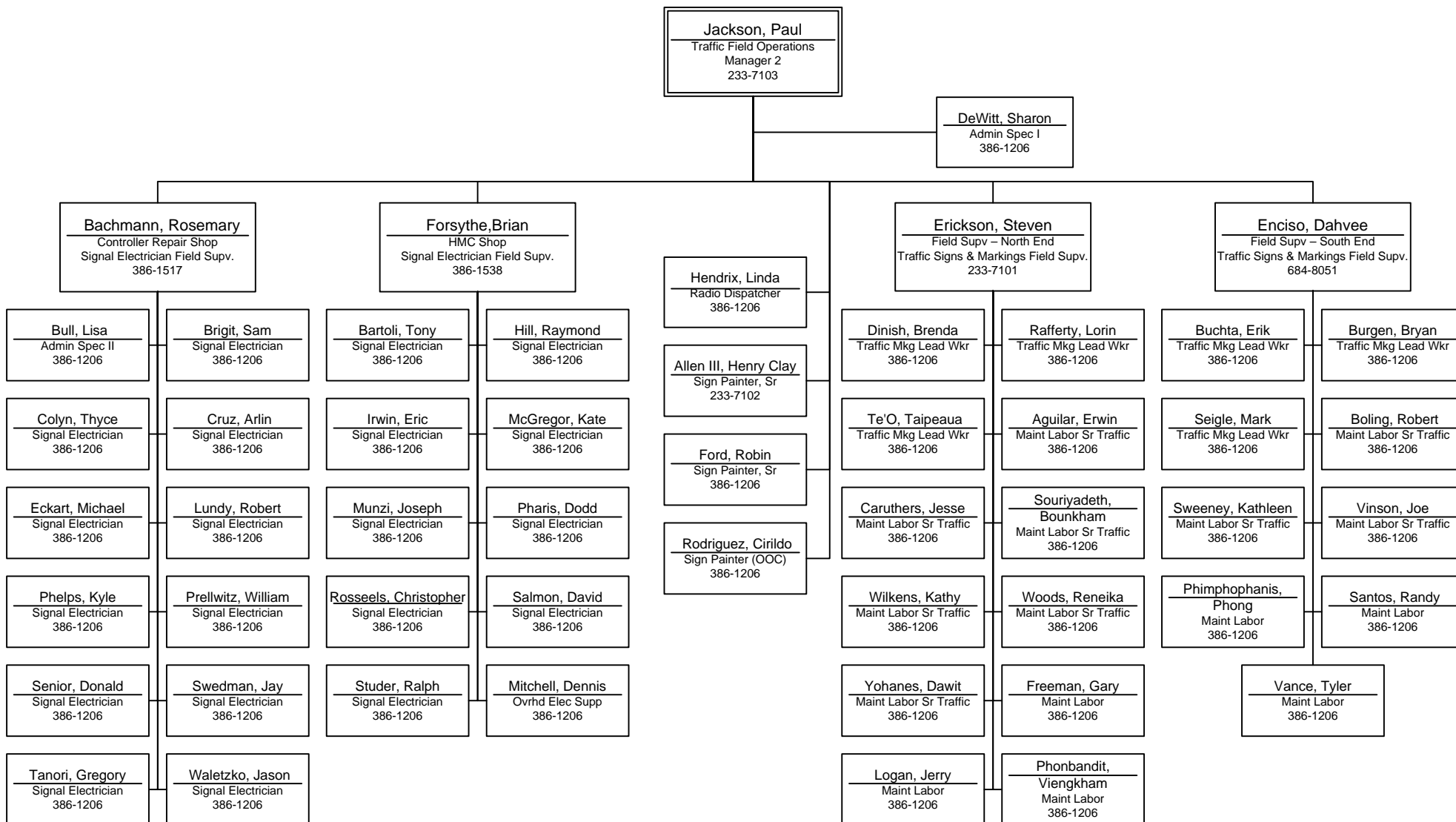
November 2011 – Page 29



Seattle Department of Transportation

Traffic Management Division
Field Operations

November 2011 – Page 30



Seattle Department of Transportation

Traffic Management Division
 Parking Operations & Traffic Permits

November 2011 – Page 31

